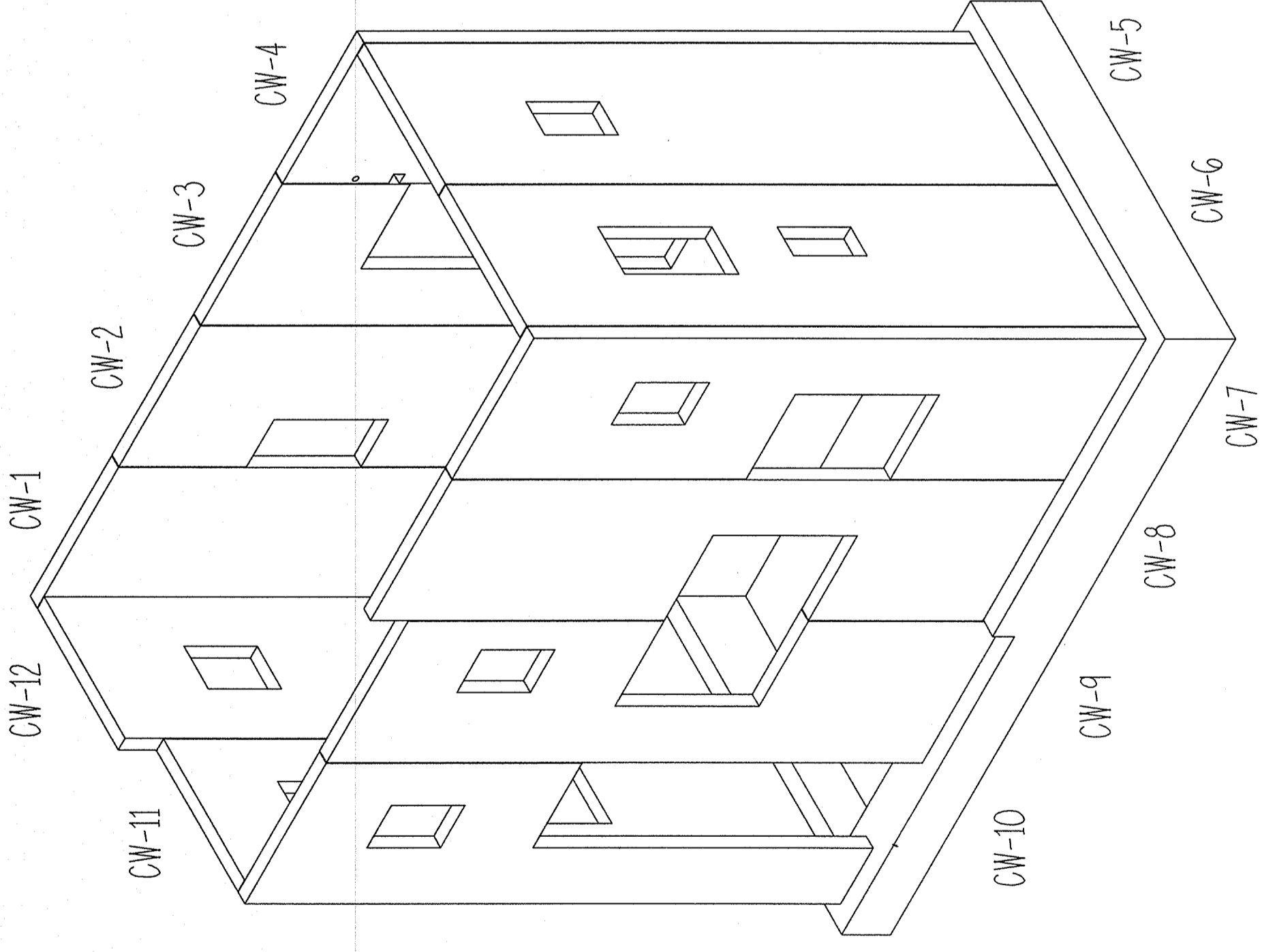


Chiles Residence

West Farm Road 124

Bois D'Arc, MO 65612



ISOMETRIC VIEW

SHEET INDEX

- COVER INDEX & GENERAL NOTES
- P-1 FOOTING EMBED LAYOUT
- W-1 10" WALL PANEL LAYOUT
- AD-1 PRECAST ARCHITECTURAL DETAILS
- E-1 PRECAST ELEVATION 1-4
- X-1 CONNECTION DETAILS
- X-2 CONNECTION DETAILS

STRUCTURAL PRECAST

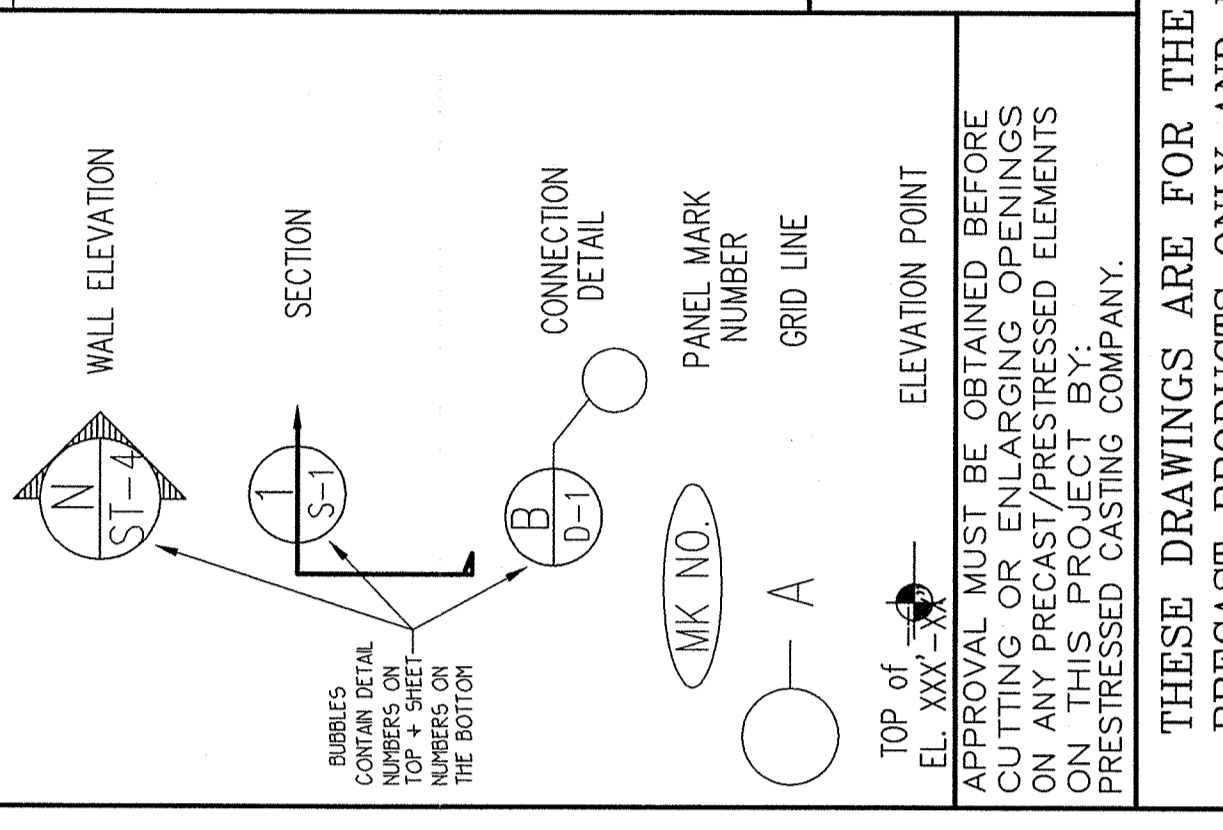
ALL PRECAST COMPONENTS AND CONNECTIONS ARE DESIGNED TO RESIST THE FOLLOWING LOADS AND TO COMPLY WITH:

- IBC 2006
 - ACI 318-05
 - AISC (ASD) 9th Edition
 - PCI Design Handbook 6th Edition (Including PCI Standard Design Practice)
- Design Loads:
- Roof Dead Load = 85 psf
 - Roof Live Load = 40 psf
 - Floor Dead Load = 42 psf
 - Floor Live Load = 40 psf
 - Snow Load = 30 psf
- Seismic:
- Seismic Design Category B
 - Site Class C
 - S_s = 0.201
 - S₁ = 0.090
 - S_{d1} = 0.161
 - S_{d1} = 0.102
- Wind:
- Velocity = 90 mph
 - Exposure C
 - I = 1.0

GENERAL NOTES

1. Groat under columns and wall panels shall be dry pack non-shrink grout with a minimum 28 day strength of 6,000 p.s.i. (Crystex). Grout under columns shall cure for a minimum of 18 hrs. at a temperature of 60 deg. F. or 3 days at a curing temperature of 40 deg. F. prior to loading. See Erection Stability Plan for job specific requirements.
2. Groat shall not be placed when the temperature of the connecting components is below 40 deg. F. Heated enclosures can be used to satisfy this requirement.
3. All welded connections shall conform to details as shown on the plans. Welding shall conform to current ANSI/AWS D1.1-86. All welds are to be made with 7018 electrodes unless otherwise noted. All welds shall be visually inspected and checked for size. ALL SLAG SHALL BE REMOVED FOR INSPECTION. See Erection Stability Plan for job specific requirements.
4. All C.I.P. elements receiving precast columns or wall panels must be poured based on the elevations and locations shown on the "P-" series sheets
Tolerance: (plan view deviation +/- 3/8" max.)
(elevation deviation +/- 1/8" max.)
Any reinforcing shown on the embedment layouts is to represent rebar required for precast panel connections and is in addition to reinforcing required by the Architectural or Structural plans.
5. The precast drawings are for the manufacture and erection of precast products only and may not be used for definition of any other products on this project.
6. Foundations that receive precast elements must be poured based on the elevations contained within these drawings. Any conflicts between elevation heights on these drawings and the architectural drawings must be coordinated between the Architect, Jobsite, and Prestressed Casting Co.
7. Structure stability during erection by means of grouting, welded connections, or bracing is addressed in this project's "ERECTION STABILITY PLAN".
8. All areas clouded or noted on these drawing shall be verified by the general contractor, architect and/or engineer of record. It will be assumed that drawings are correct as shown unless comments are made on the submittal set.
9. These drawings marked approved or approved as noted indicate the following:
 - The General Contractor or Construction Manager has completely checked and verified all dimensions, including Precast Concrete Locations, Floor Elevations, Precast Sizes, and has coordinated the size and locations of all openings with the other sub-contractors and that all sizes, dimensions, and locations are correct and final.
 - The Architect has reviewed these drawings and that the interpretation and intent of the contract drawings has been followed.
 - The Structural Engineer has reviewed these drawings and the Design Calculations and that they are in compliance with the Structure Requirements.
10. Prestressed Casting Company is not responsible for adequacy of foundations nor deviations from foundation conditions as shown by the contract drawings. Erection of Precast Concrete cannot begin until written notification that Footings, Piers, and Walls or Mortar in the Masonry Piers and Walls has attained sufficient strength to support the loads imposed during Precast Erection, as determined by Others.
11. The General Contractor/Construction Manager shall coordinate all penetrations, Blockouts, Openings and all other interfaces between the Precast Structure and the Work of other trades. Prestressed Casting shall provide header Blockouts in the Precast Elements only as shown on these Drawings.
12. Field Dimensioning, When Required, is the Sole responsibility of the General Contractor/Construction Manager and any variation shall be noted on the Approved Submittal Drawings. Changes in Dimensions May affect our Cost and Delivery Schedule.
13. The General Contractor/ Construction Manager shall be responsible for the protection against debris and damage to each precast element and its connections after it has been erected.
14. No part of these documents may be used or copied without the written authorization from Prestressed Casting Company.

REFERENCE SYMBOLS



ABBREVIATIONS

AB.	ANCHOR BOLTS	WK	WALL NUMBER
AN.	ANGLE (STEEL)	M.S.	MARK NUMBER
BM	BEAM	N.T.S.	NOT TO SCALE
BRG	BEARING	O.C.	ON CENTER
BTWN	BETWEEN	OPN	OPENING
B/O	BLOCKOUT	OPF	OFFSET
BTM	BOTTOM	OUT	OUT TO OUT
C.I.P.	CAST-IN-PLACE	O.O.	OVERALL
CL	CENTERLINE	O.H.	OVERHEAD
CLR	CLEAR	PNL	PANEL
CL.	CLEARANCE	P	PLATE
C.L.	CONSTRUCTION JOINT	PKT	POCKET
C.F.	CONCRETE	P.S.I.	POUNDS PER SQUARE INCH
EL/ELEV	ELEVATION	REQD	REQUIRED
EL.	ELEVATION	RECD	RECORDED
F.F.	FRESH FLOOR	T.O.	TOP OF
FTG	FOOTING	TPG	TYPICAL
CAV	CALVAZE	TYP.	TYPICAL
CL	GRID LINE	UNO.	UNLESS NOTED OTHERWISE
L-PM	INVERTED TEE BEAM	W.P.	WALL PANEL
JT	JOINT	WT	DOUBLE TEE
L-BM	L-SHAPED BEAM		

PRINT DATE: 10/21/2011

THESE DRAWINGS ARE FOR THE MANUFACTURE AND ERECTION OF PRECAST PRODUCTS ONLY AND MAY NOT BE USED FOR LAYOUT OR DEFINITIONS OF ANY OTHER PRODUCTS ON THIS PROJECT.

121 SAN MATEO ABLORERQUE, NM 87110
(505) 280-1460 FAX (505) 280-1459
www.salmosp.com

SALMONS P.C.
PRECAST CONCRETE SPECIALTY ENGINEERING
MO / #2002006607

1600 SOUTH SCENIC 65808
P.O. BOX 3489 G.S.
SPRINGFIELD, MISSOURI
(417) 869-7350 869-1283
www.PrestressedCasting.com

Prestressed Casting Co.

WEST FARM ROAD 124
BOIS D'ARC, MO

CHILES RESIDENCE

DATE	DESCRIPTION	BY
10/21/11		

REVISIONS

INDEX AND GENERAL NOTES
SCALE: 1/8" = 1'-0" DRAWN BY: NRI
DATE: 10-09-11 CHECKED BY: JF

JOB NO.
11.15

DRAWING NUMBER
COVER

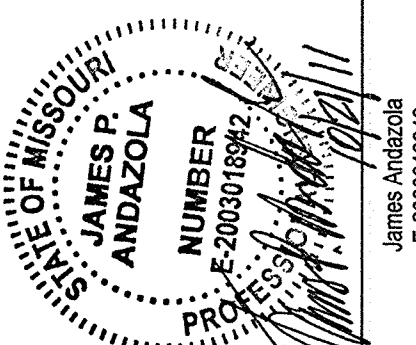
THESE DRAWINGS ARE FOR THE MANUFACTURE AND ERECTION OF PRECAST PRODUCTS ONLY AND MAY NOT BE USED FOR LAYOUT OR DEFINITIONS OF ANY OTHER PRODUCTS ON THIS PROJECT.

1121 SAN MATTHEW NE ALBUQUERQUE, NM 87110
 (505) 280-1460 FAX (505) 280-1459
SALMONS P. L.
 PRECAST CONCRETE SPECIALTY ENGINEERING
 www.salmonspc.com

1600 SOUTH SCENIC SPRINGFIELD, MISSOURI
 P.O. BOX 3499 G.S. 65807
Presssted Casting Co.
 (417) 869-7350 869-1263
 www.PressstedCasting.com

MO / #202006607

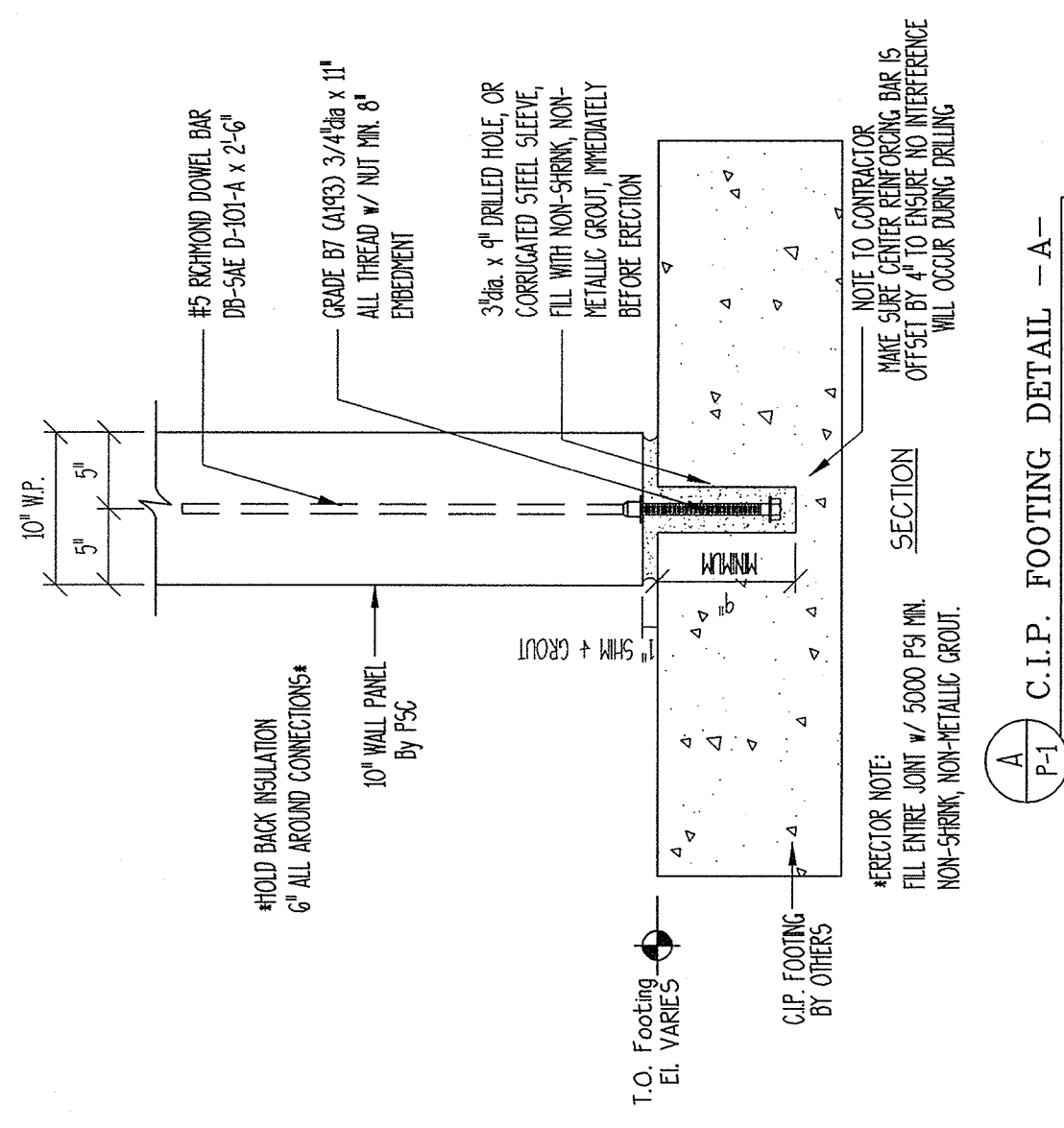
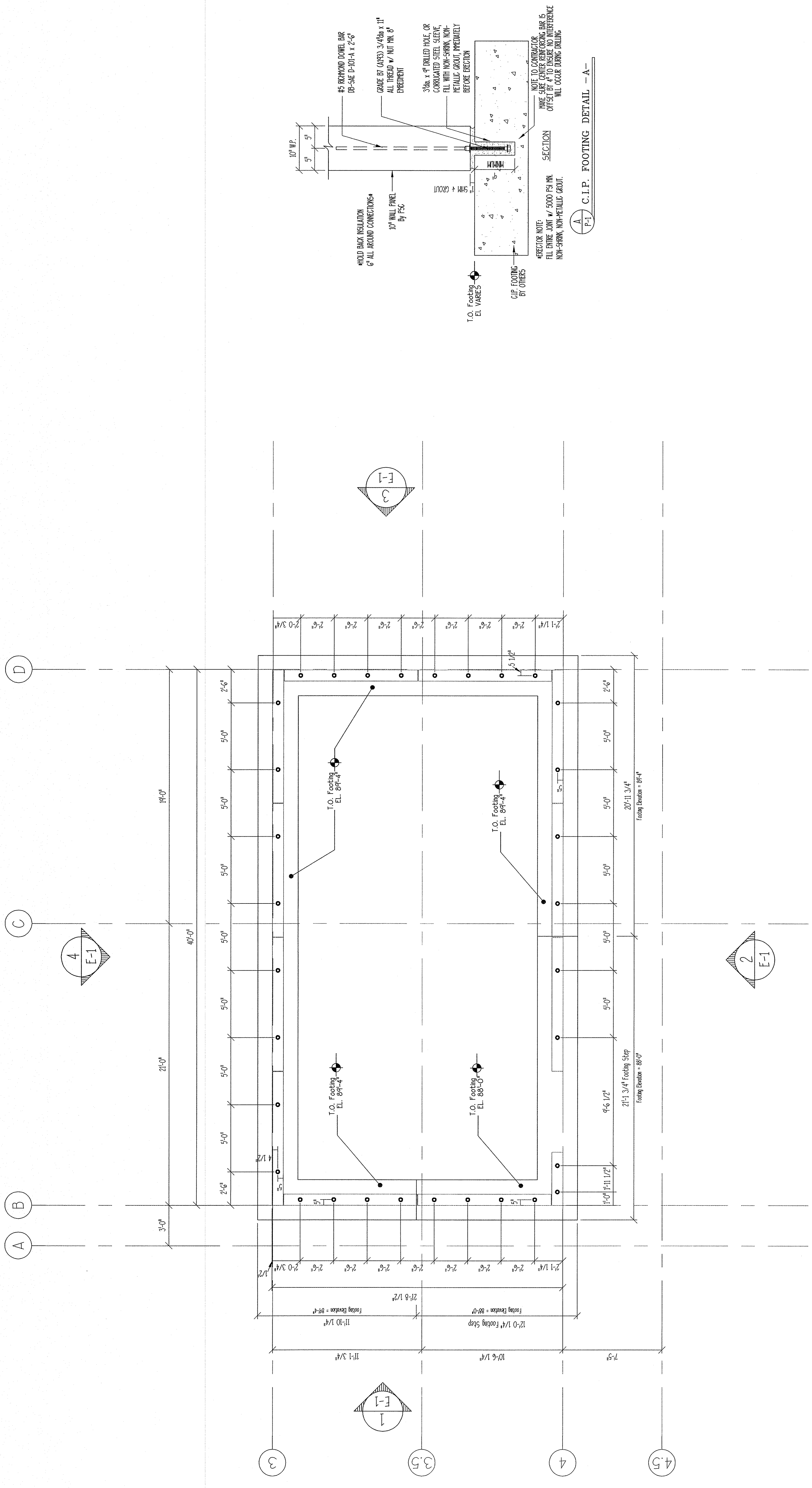
WEST FARM ROAD 124
CHILES RESIDENCE
 BOIS D'ARC, MO



REVISIONS	DATE	DESCRIPTION	BY

TITLE: **FOOTING EMBEDMENT PLAN**
 SCALE: 1/4"=1'-0"
 DATE: 9-08-11
 JOB NO.: 1115
 DRAWING NUMBER: P-1

THESE DRAWINGS ARE FOR THE MANUFACTURE AND ERECTION OF PRECAST CONCRETE ELEMENTS BY PRESSSTED CASTING COMPANY ONLY AND MAY NOT BE USED FOR LAYOUT OR SETTING OF ANY OTHER PRODUCTS ON THIS PROJECT.
 APPROVAL MUST BE OBTAINED BEFORE CUTTING OR MAKING OPENINGS ON ANY PRECAST/PRESSSTED ELEMENTS ON THIS PROJECT BY PRESSSTED CASTING COMPANY.
 SCALE: FOLLOW DIMENSIONS.

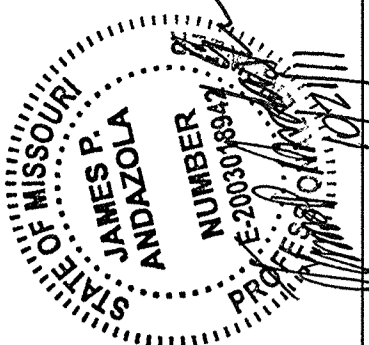


FOOTING EMBEDMENT PLAN



REVISIONS	DATE	DESCRIPTION	BY

James Avila
E-200018942

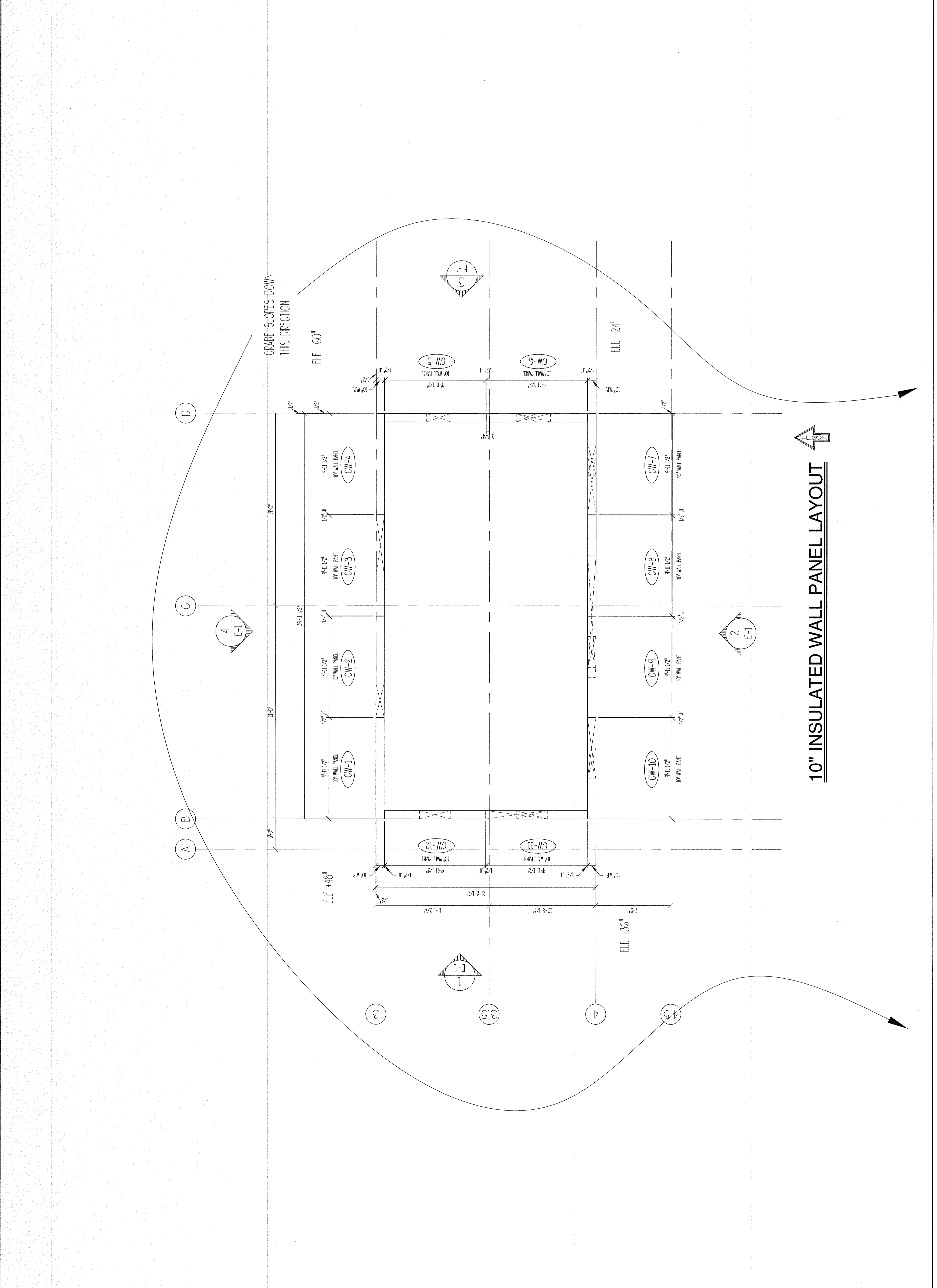


CHILES RESIDENCE
WEST FARM ROAD 124
BOIS D'ARC, MO

SALMONS P.C.
PRECAST CONCRETE SPECIALTY ENGINEERING
1121 SAN MATEO NE ALBUQUERQUE, NM 87110
(505) 260-1460 FAX (505) 260-1459
www.salmonspc.com

MO / #2002006607
1800 SOUTH SCENIC SPRINGFIELD, MISSOURI 65807
P.O. BOX 3499 G.S. 65807
PRESTRESSED CASTING Co.
(417) 869-7350 869-1263
www.PrestressedCasting.com

APPROVAL MUST BE OBTAINED BEFORE CUTTING OR
ENHANCING OPENINGS ON ANY PRECAST/PRESTRESSED ELEMENTS
ON THIS PROJECT BY PRESTRESSED CASTING COMPANY.
THESE DRAWINGS ARE FOR THE MANUFACTURE AND ERECTION OF PRECAST
CONCRETE PRODUCTS BY PRESTRESSED CASTING COMPANY ONLY AND MAY NOT BE
USED FOR LAYOUT OR DETERMINING OF ANY OTHER PRODUCTS ON THIS PROJECT.

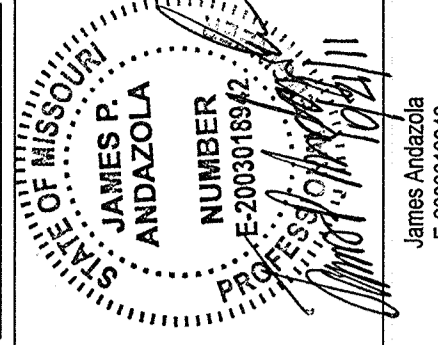


121 SAN MATEO NE. ALBUQUERQUE, NM 87110
 (505) 260-1460 FAX (505) 260-1459
 www.salmc.com
SALMCO P.C.
 PRECAST CONCRETE SPECIALTY ENGINEERS
 MO / #200200607

1600 SOUTH SCENIC 65807
 P.O. BOX 4489 SPRINGFIELD, MISSOURI
 (417) 869-7350 869-1263
 www.PrestressedCasting.com
Prestressed Casting Co.

WEST FARM ROAD 124
 BOIS D'ARC, MO

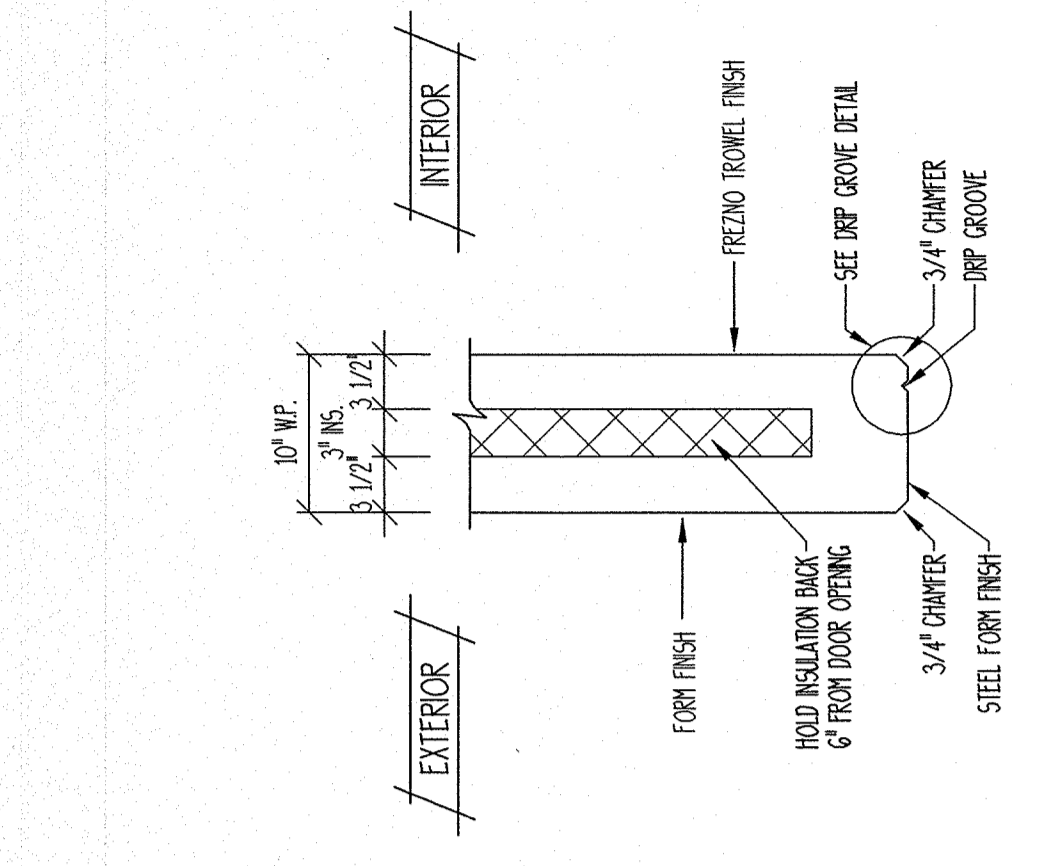
CHILES RESIDENCE



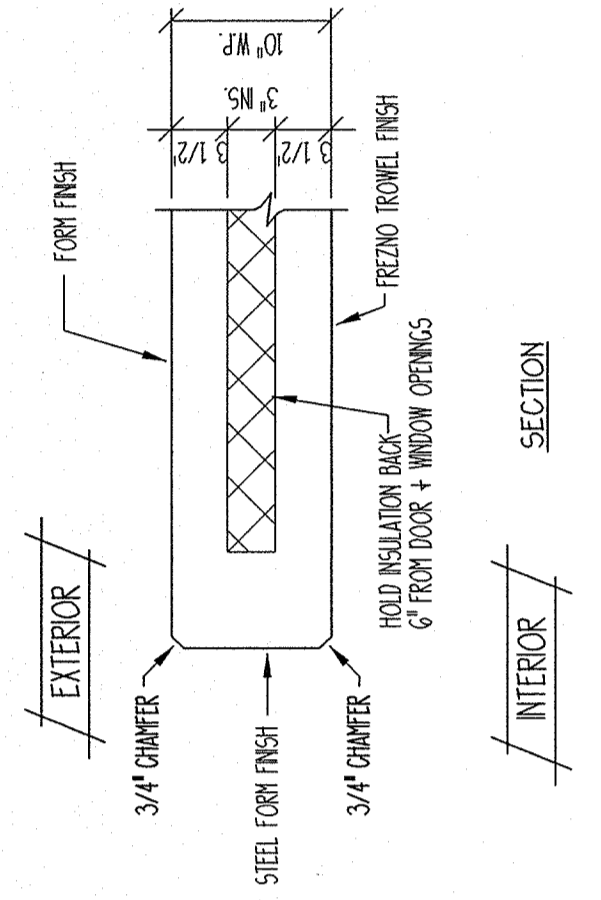
REVISIONS		BY
DATE	DESCRIPTION	
10/14/11		
10/14/11		

TITLE: PRECAST ARCHITECTURAL DETAILS
 SCALE: 1/4" = 1'-0" DRAWN BY: NRM
 CHECKED BY: LP
 DATE: 10/14/11
 JOB NO.: 11.15
 DRAWING NUMBER: AD-1

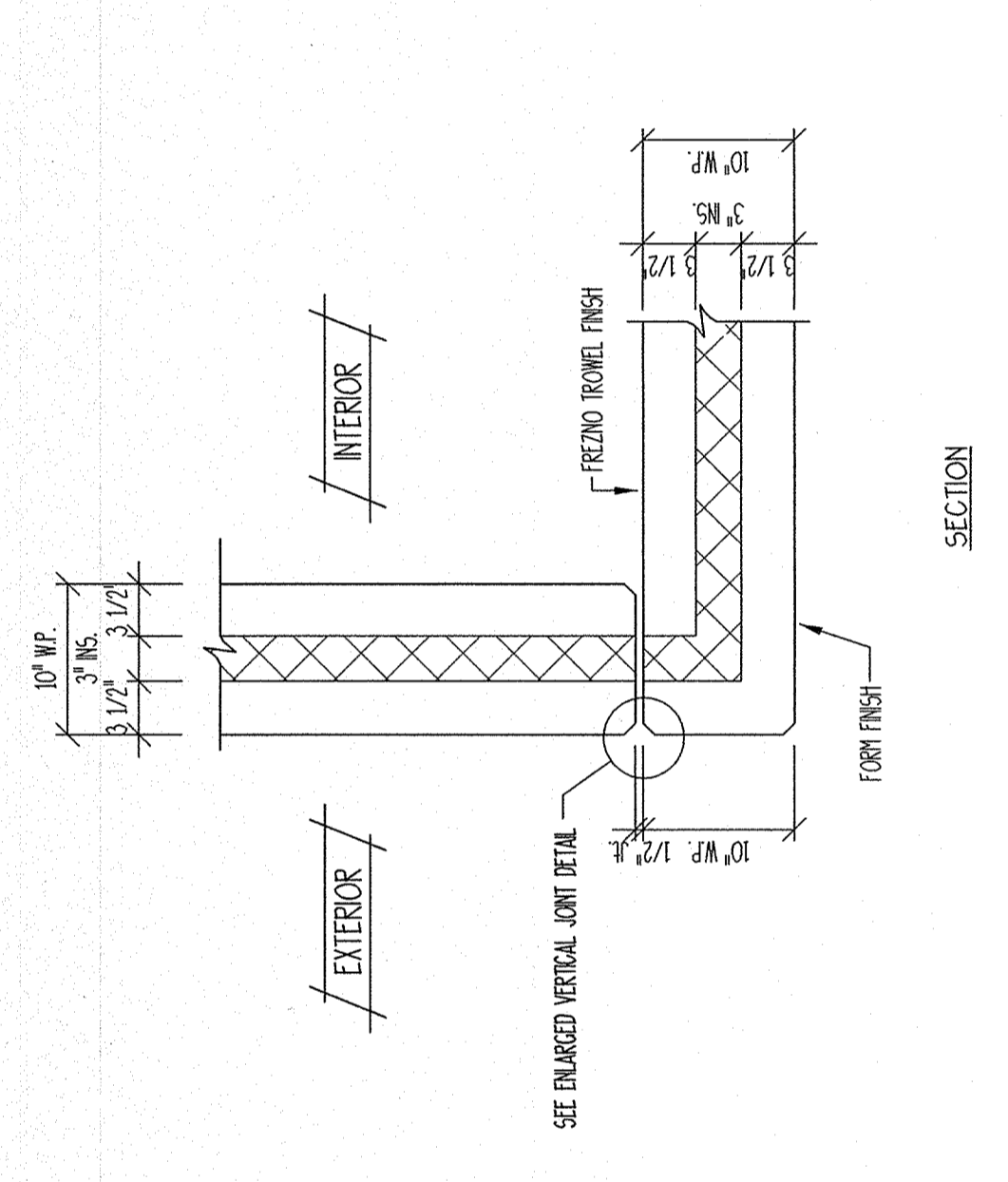
APPROVAL MUST BE OBTAINED BEFORE CUTTING OR MAKING CHANGES TO ANY PRECAST/PRESTRESSED ELEMENTS. THESE DRAWINGS ARE FOR THE MANUFACTURE AND Erection OF PRECAST ARCHITECTURAL DETAILS ONLY. THEY MAY NOT BE USED FOR LAYOUT OR SETTING OF ANY OTHER PRODUCTS ON THIS PROJECT. SCALE: FOLLOW DIMENSIONS ON THIS PROJECT.



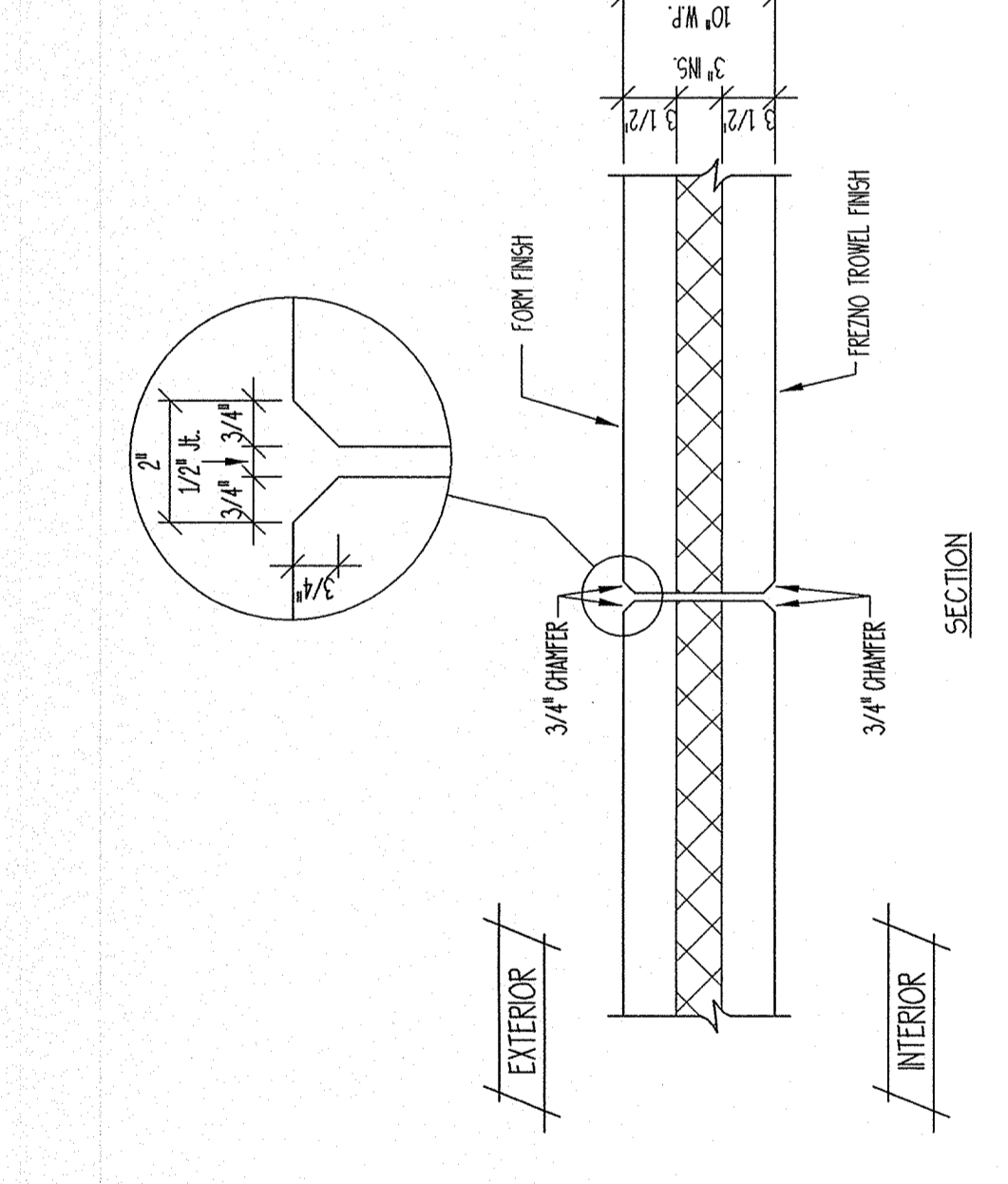
TYPICAL DOOR HEAD DETAIL



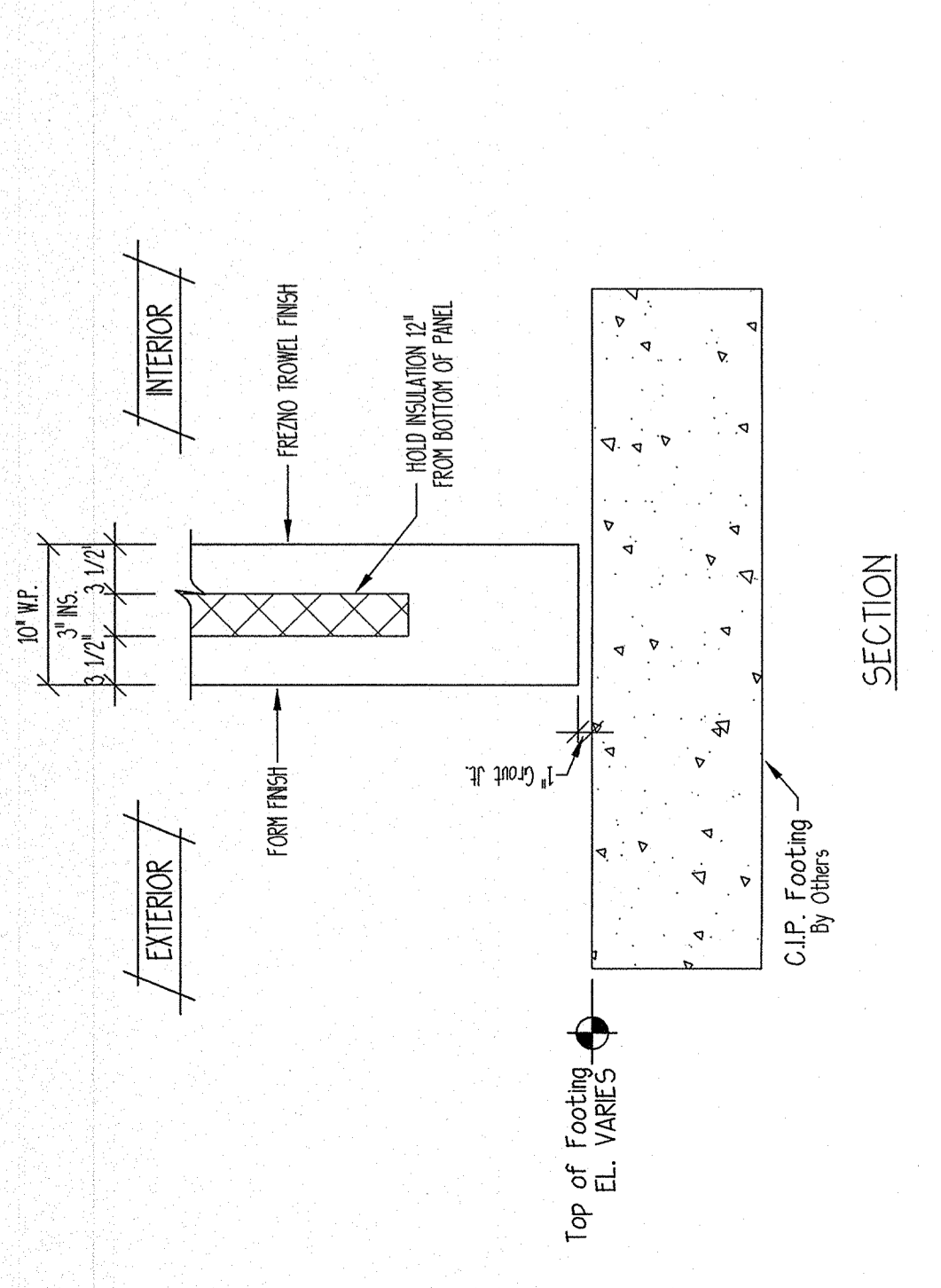
TYPICAL DOOR + WINDOW JAMB DETAIL



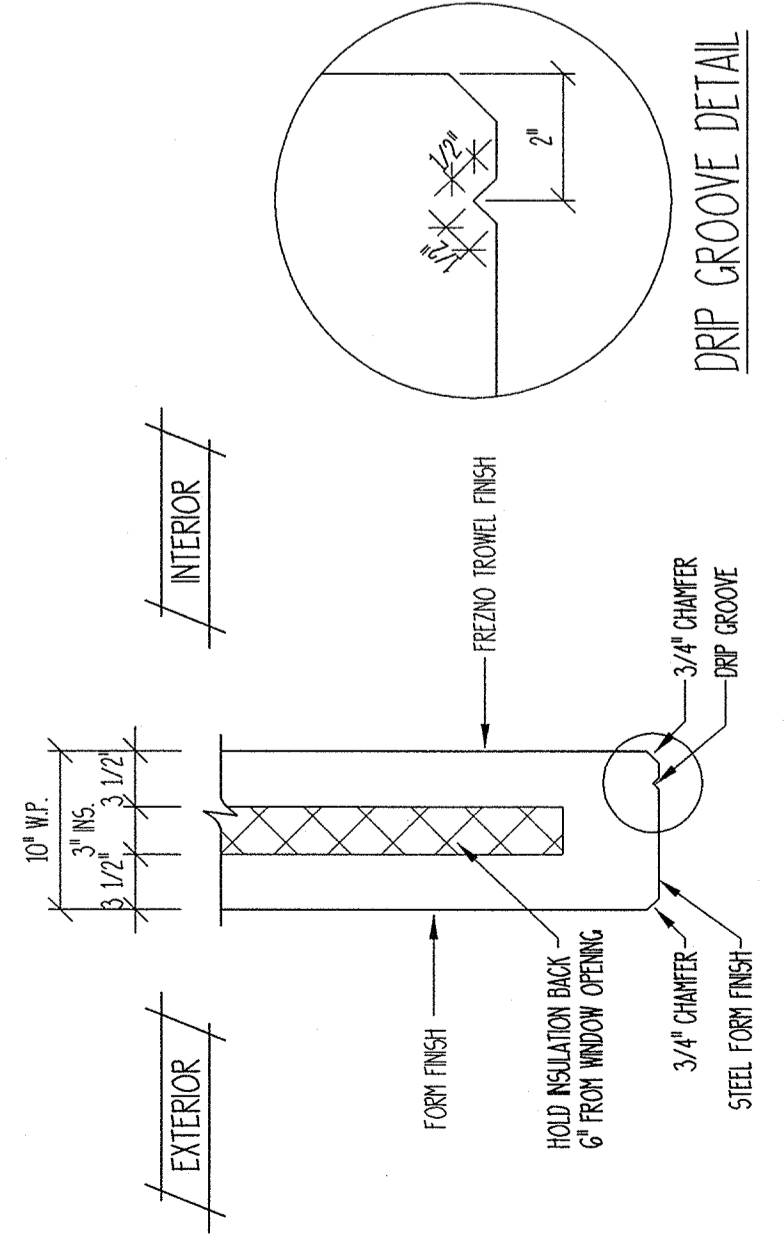
TYPICAL WALL PANEL CORNER DETAIL



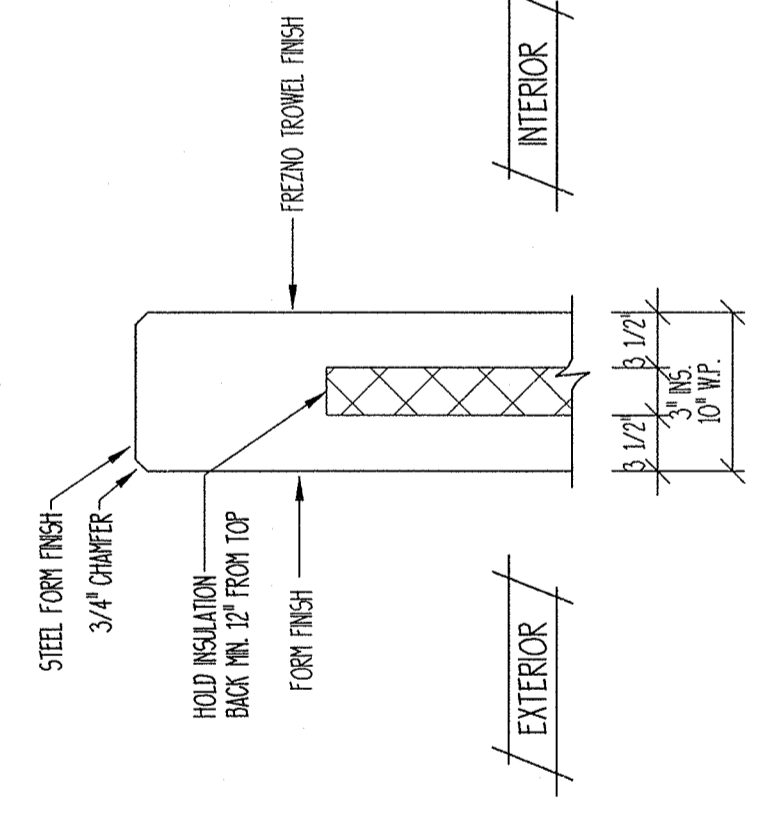
TYPICAL VERTICAL WALL PANEL PANEL JOINT



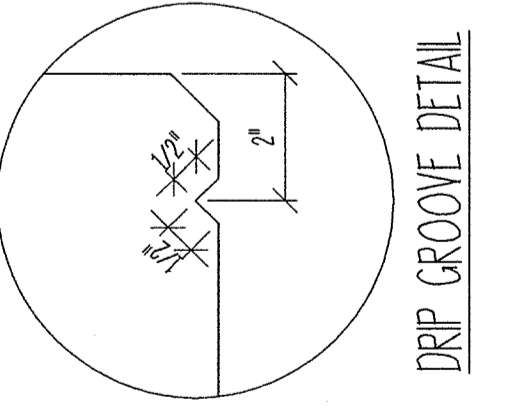
TYPICAL BOTTOM OF PRECAST WALL PANEL PANEL



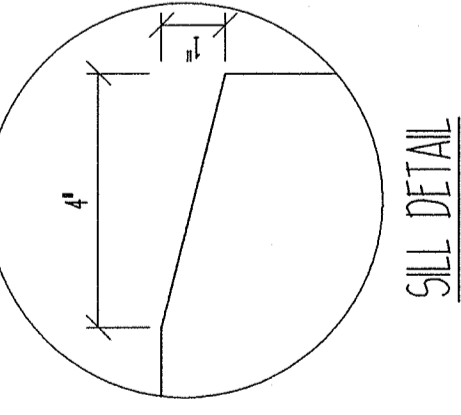
TYPICAL WINDOW DETAIL



TYPICAL T.O.W. DETAIL



DRIP GROOVE DETAIL



SILL DETAIL

1121 SAN MATEO NE ALBUQUERQUE, NM 87110
 (505) 289-1489 FAX (505) 289-1489
 www.salmos.com

SALMOS P.C.
 PRECAST CONCRETE SPECIALTY ENGINEERING
 (417) 869-7350 869-1263
 1600 SOUTH SCENIC
 SPRINGFIELD, MISSOURI 65807
 www.PrestressedCasting.com

WEST FARM ROAD 124
CHILES RESIDENCE
 BOIS D'ARC, MO

STATE OF MISSOURI
 JAMES P. ANDAZOLA
 NUMBER
 E-2003010342
 DATE 10/25/11

DATE	REVISIONS	BY

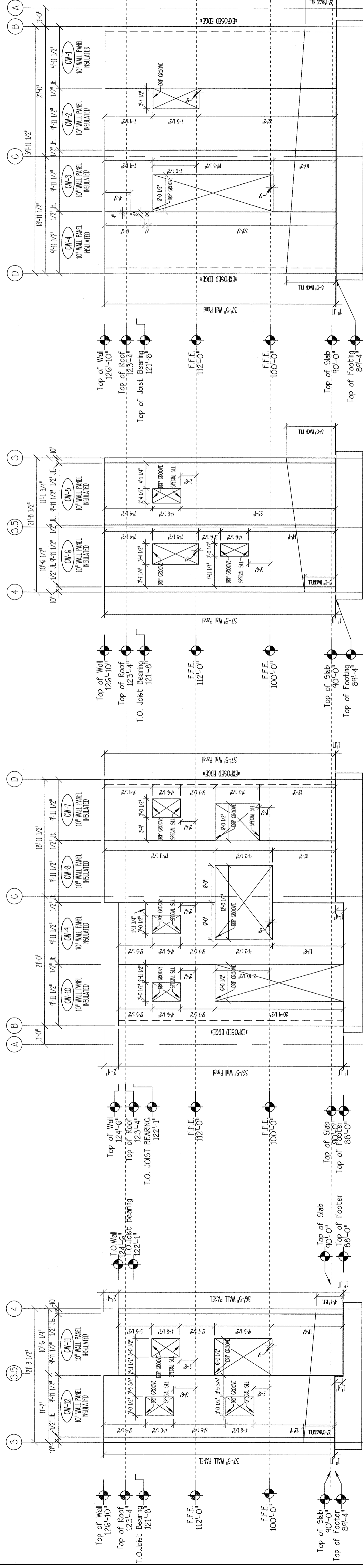
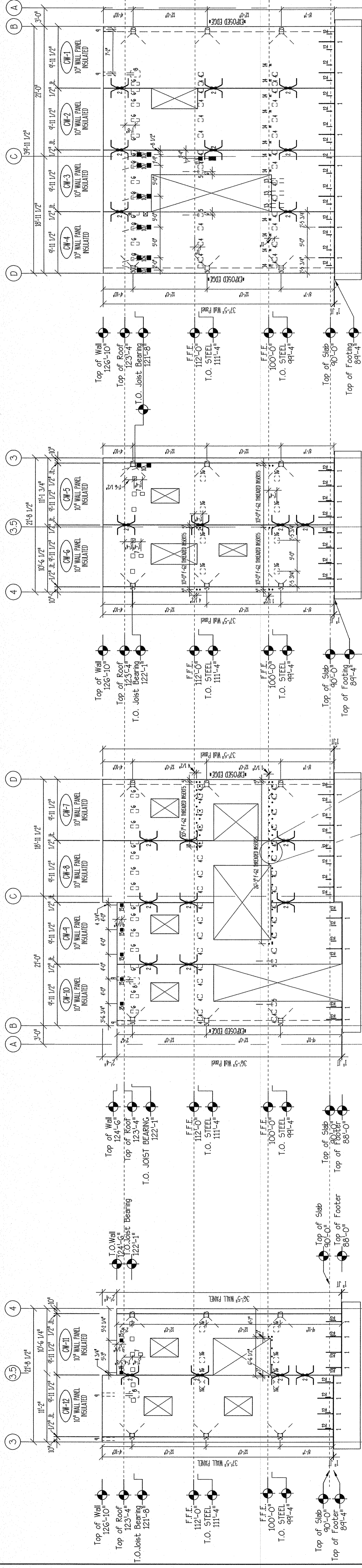
TITLE
 ELEVATION PLAN
 SCALE: 1/8"=1'-0"
 DRAWN BY: NRM
 DATE: 9-12-11
 CHECKED BY: JF

JOB NO.
 1115

DRAWING NUMBER
 E-1

THESE DRAWINGS ARE FOR THE MANUFACTURE AND ERECTION OF PRECAST
 CONCRETE ELEMENTS BY PRESTRESSED CASTING COMPANY, INC. AND NOT BE
 USED FOR ANY OTHER PURPOSES OR FOR THE MANUFACTURE OF ANY OTHER PRODUCTS ON THIS PROJECT.

APPROVAL MUST BE OBTAINED BEFORE CUTTING OR
 MODIFYING ANY DIMENSIONS OR REVISIONS TO THESE ELEMENTS.
 SCALE: FOLLOW DIMENSIONS ON THE PROJECT BY PRESTRESSED CASTING COMPANY.



1 WEST ELEVATION
 ALONG GRIDLINE B

VIEWED LOOKING EAST
 FACE SHOWN: FORM FINISH - RIVERSAND-GREY MIX
 OPPOSITE FACE: FREZZO FINISH

2 SOUTH ELEVATION
 ALONG GRIDLINE 4

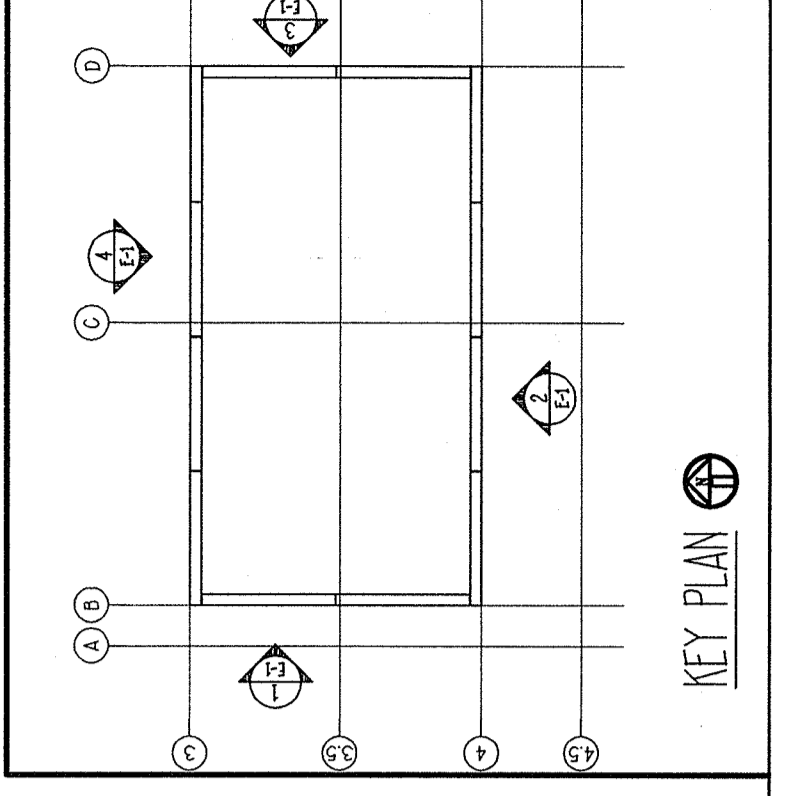
VIEWED LOOKING NORTH
 FACE SHOWN: FORM FINISH - RIVERSAND-GREY MIX
 OPPOSITE FACE: FREZZO FINISH

3 EAST ELEVATION
 ALONG GRIDLINE D

VIEWED LOOKING WEST
 FACE SHOWN: FORM FINISH - RIVERSAND-GREY MIX
 OPPOSITE FACE: FREZZO FINISH

4 NORTH ELEVATION
 ALONG GRIDLINE 3

VIEWED LOOKING SOUTH
 FACE SHOWN: FORM FINISH - RIVERSAND-GREY MIX
 OPPOSITE FACE: FREZZO FINISH



CHILES RESIDENCE
 WEST FARM ROAD 124
 BOIS D'ARC, MO

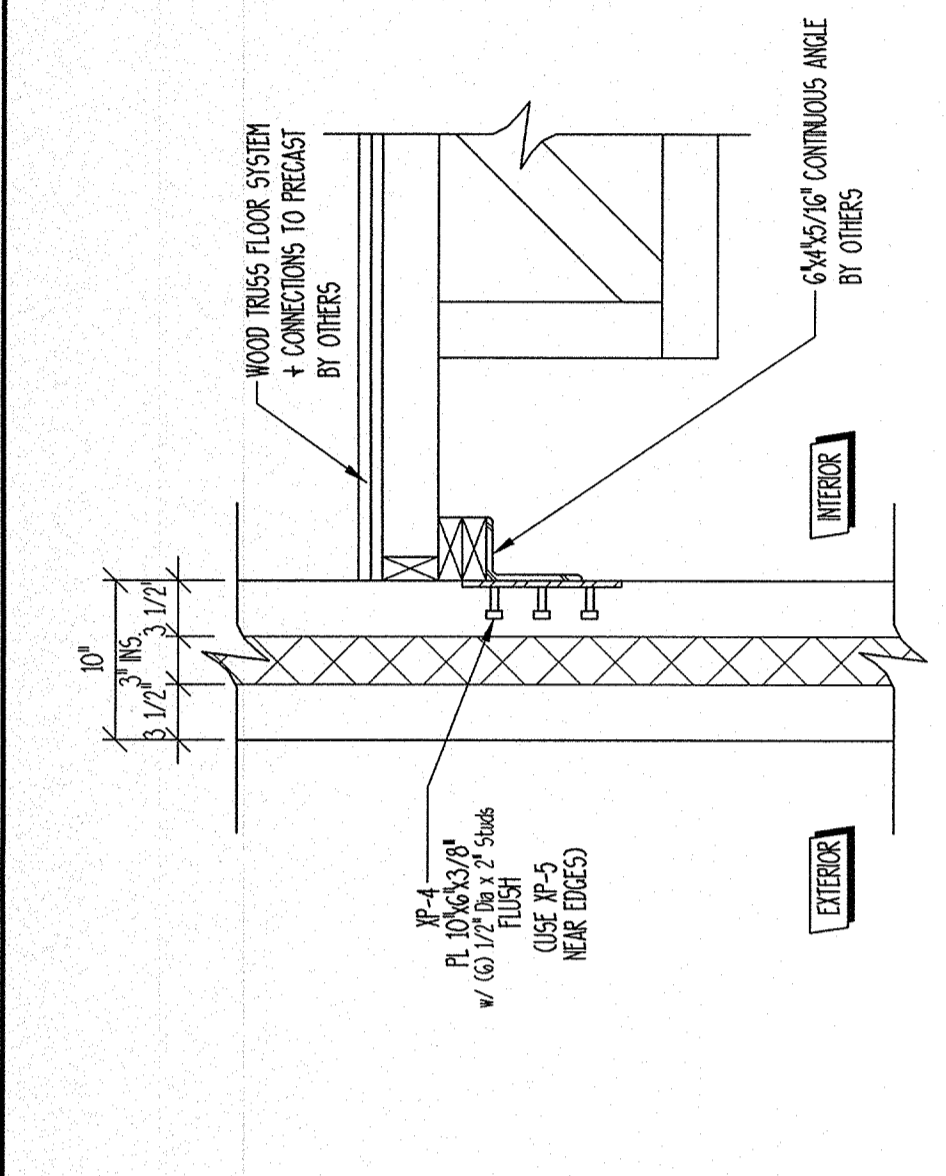
Salmons P.C.
 1121 SAN MATO NE ALBUQUERQUE, NM 87110
 (505) 282-1460 FAX (505) 282-1459
 www.salmons-pc.com
 PRECAST CONCRETE SPECIALTY ENGINEERING
 MO / #2002006607

THESE DRAWINGS ARE FOR THE MANUFACTURE AND REGION OF PRECAST
 CONCRETE PRODUCTS BY PRESTRESSED CASTING COMPANY ONLY AND NOT BE
 USED FOR LAYOUT OR DIMENSIONS OR ANY OTHER PRODUCTS ON THIS PROJECT.
 SCALE: FOLLOW DIMENSIONS.
 APPROVAL MUST BE OBTAINED BEFORE CUTTING OR
 REVISIONS TO THESE DRAWINGS ARE NOT TO BE MADE.
 PRESTRESSED CASTING Co.
 1600 SOUTH CENTRAL
 P.O. BOX 3498 G.S.
 FRINGETREE, MISSOURI
 (417) 869-7350 869-1263
 www.PrestressedCasting.com

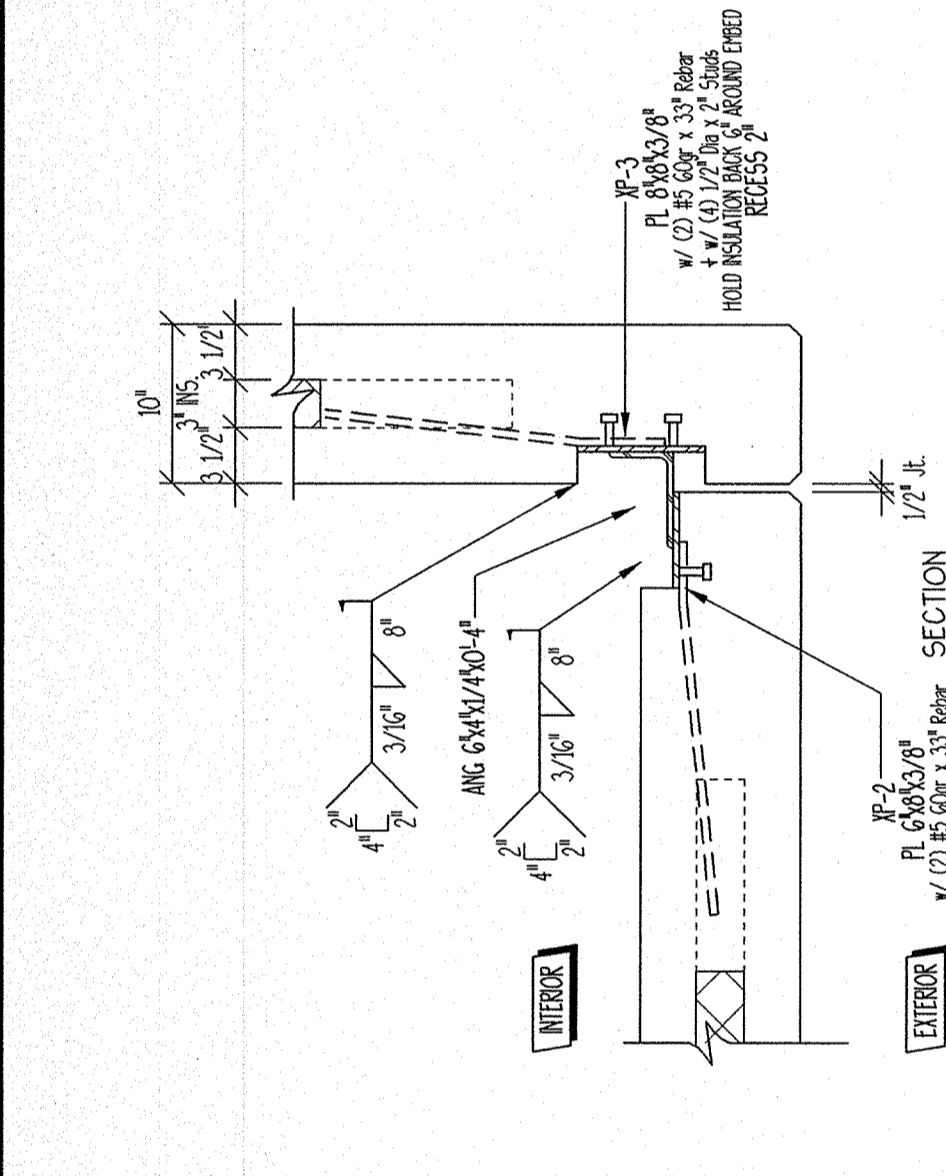
STATE OF MISSOURI
 JAMES P. JANDAZOLA
 NUMBER E-20030884
 EXPIRES 12/31/11

REVISIONS	DATE	DESCRIPTION	BY
1	10/01/11	ISSUED FOR CONSTRUCTION	NTM
2	10/01/11	ISSUED FOR CONSTRUCTION	NTM
3	10/01/11	ISSUED FOR CONSTRUCTION	NTM

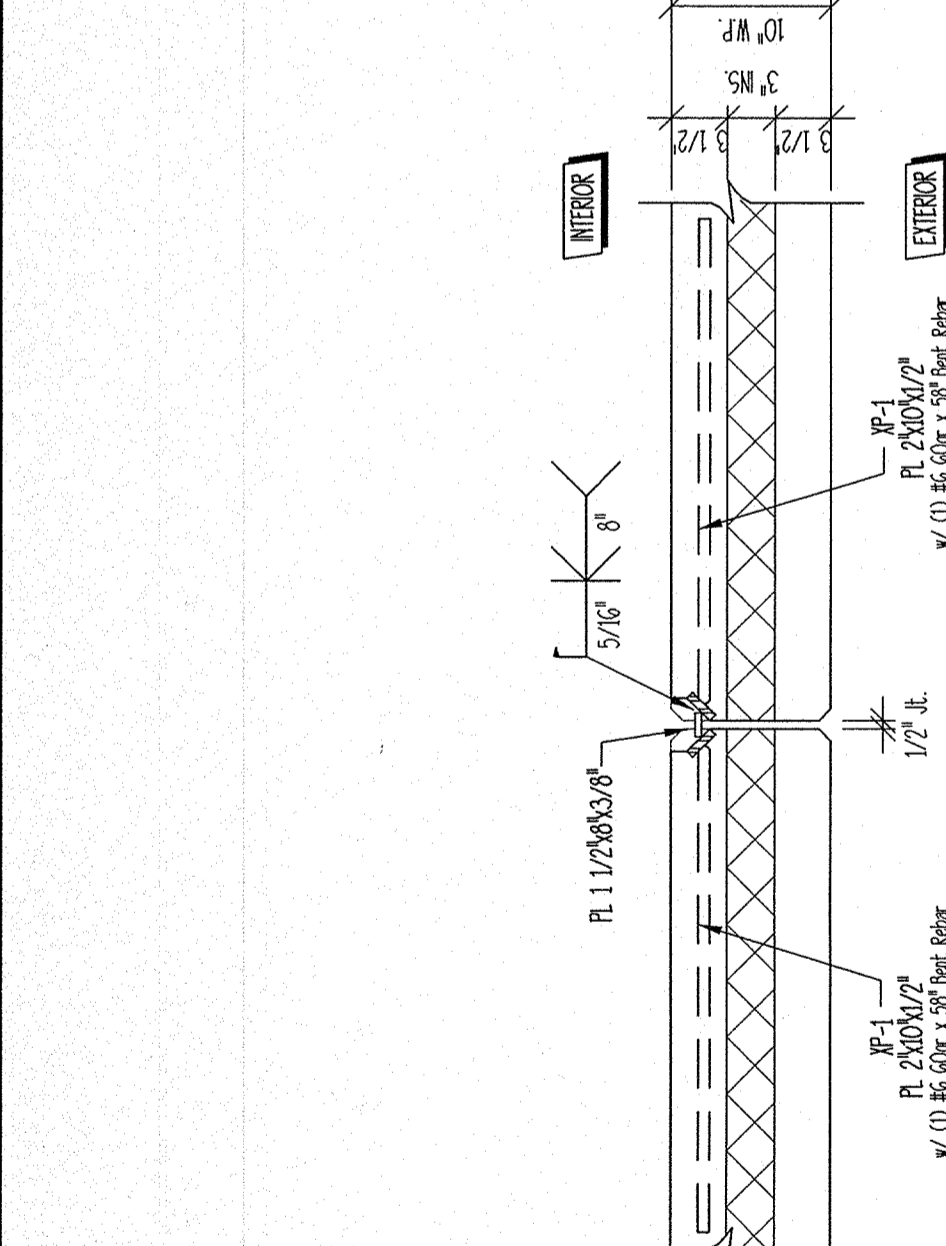
FILE	CONNECTION DETAILS
SCALE: 1/4" = 1'-0"	DRAWN BY: NTM
DATE: 9-12-2011	CHECKED BY: LP
JOB NO. 11.15	
DRAWING NUMBER X-1	



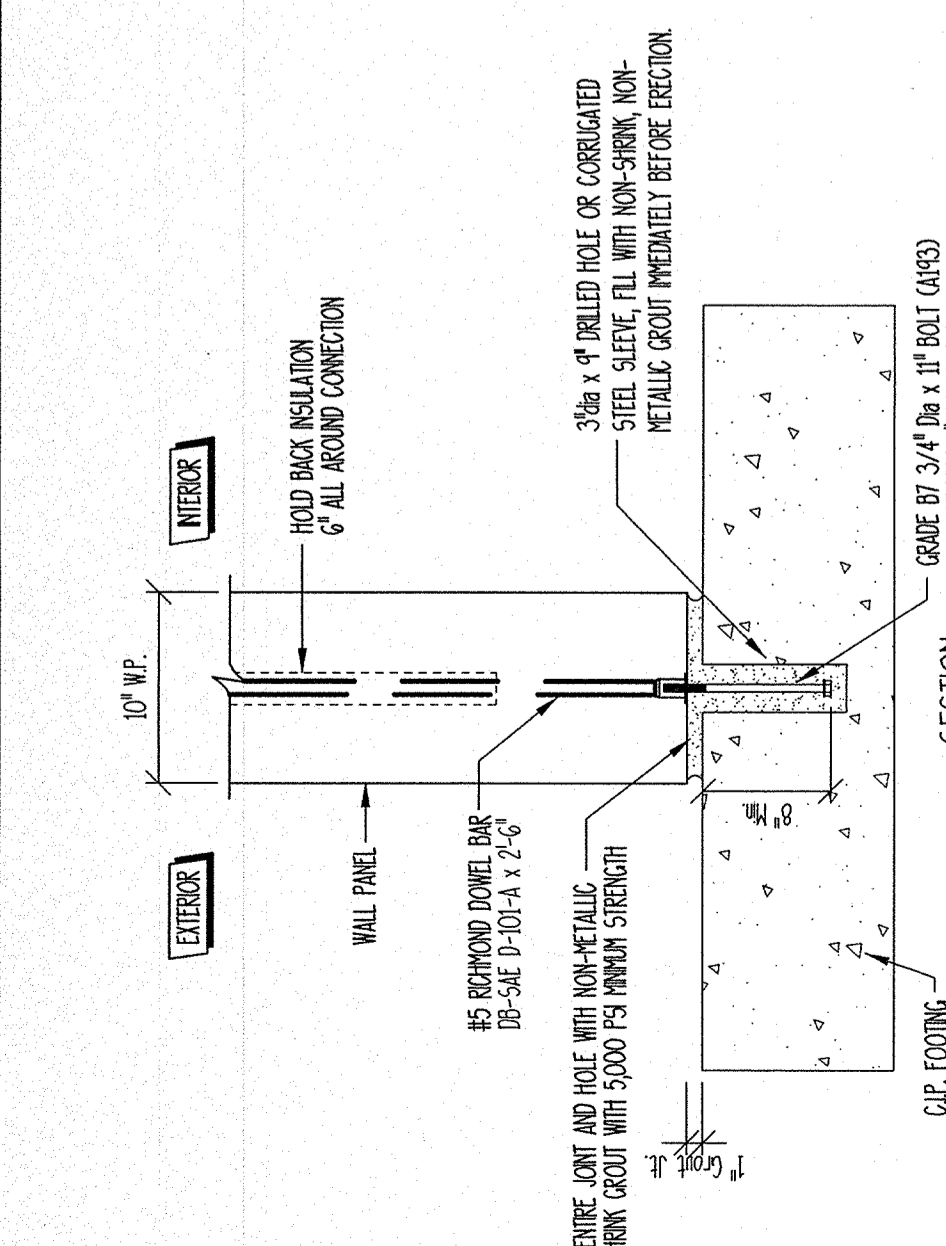
4
 10" WALL PANEL TO FLOOR TRUSS CONNECTION
 PROVIDE CONNECTION AT 30" O.C.
 SALMONS PC = X4



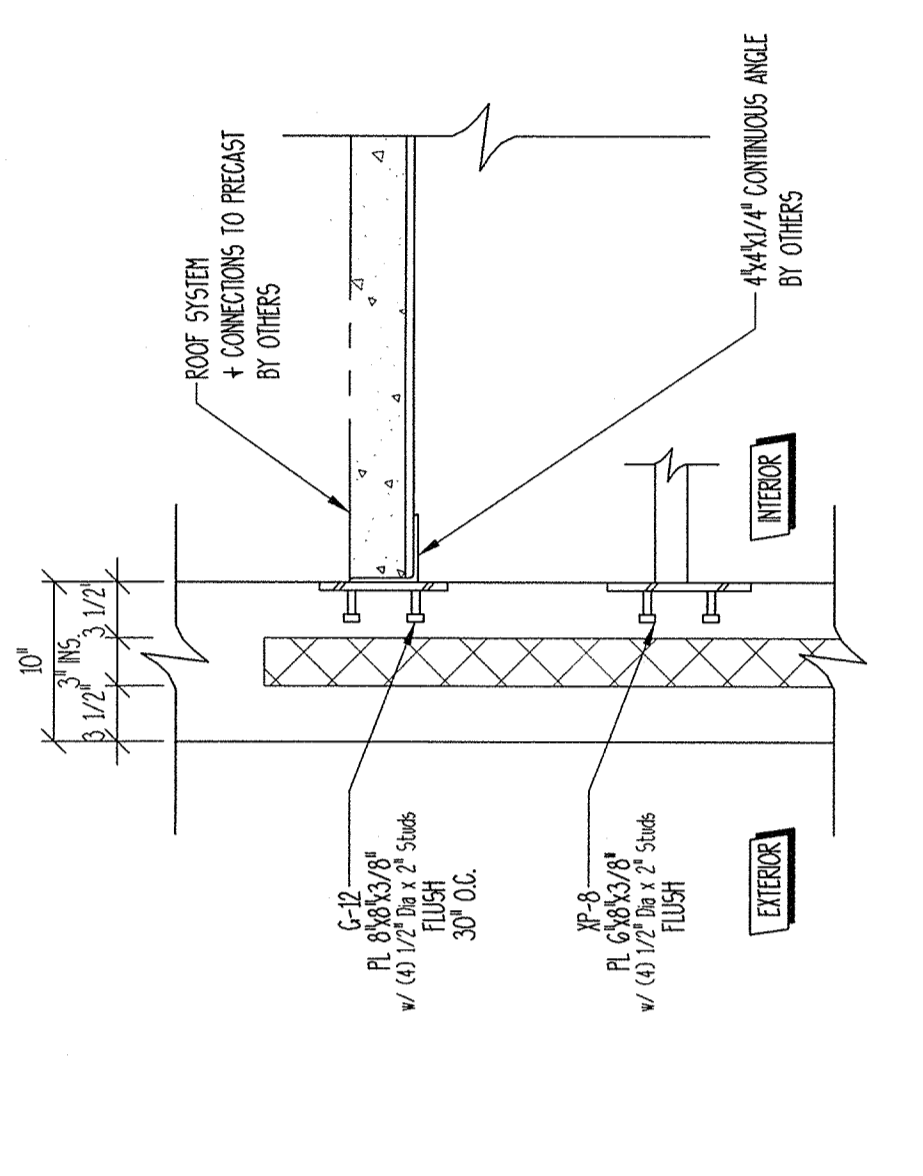
3
 10" WALL PANEL TO WALL PANEL CORNER CONNECTION
 PROVIDE CONNECTION AT 1/2" HEIGHT AND TOP
 SALMONS PC = X3



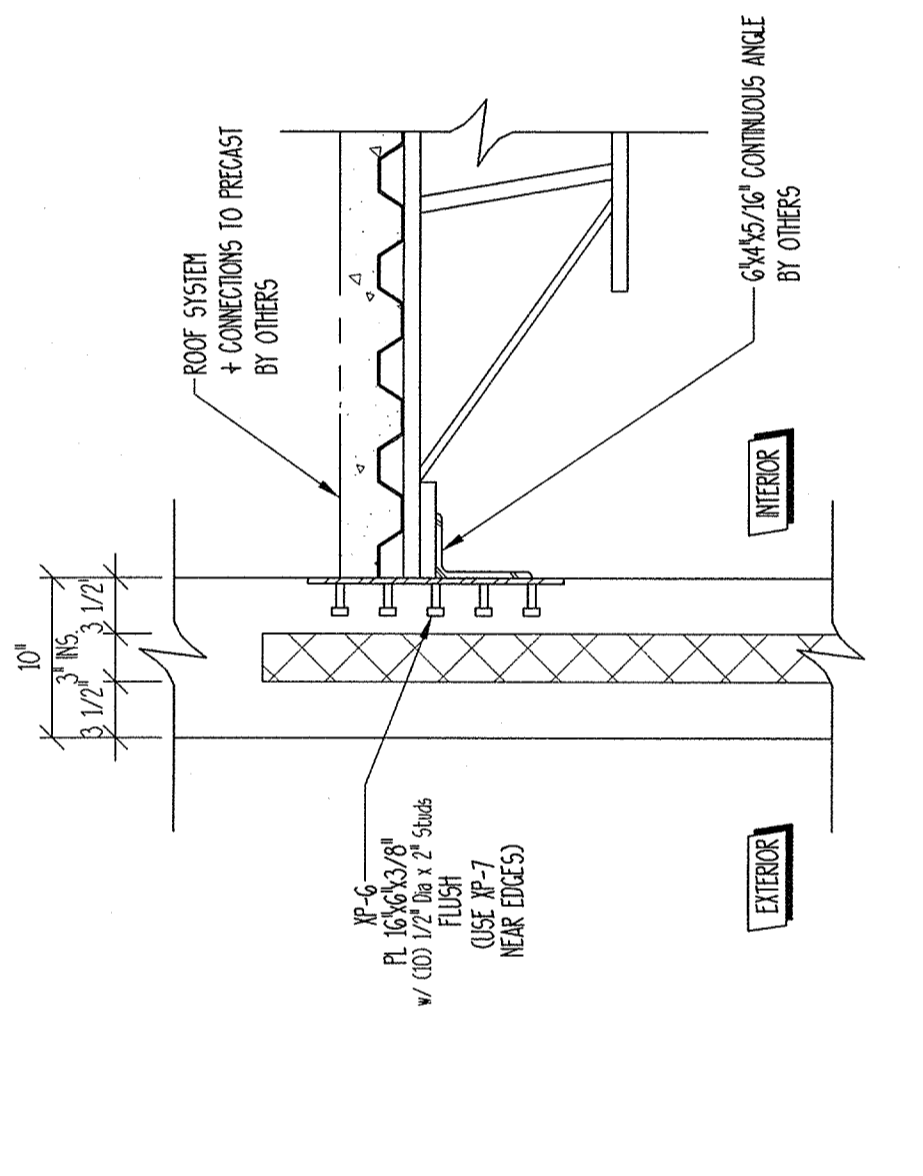
2
 10" WALL PANEL TO WALL PANEL CONNECTION
 PROVIDE 1/2" CONNECTIONS PER VERTICAL JOINT TYPICAL
 SALMONS PC = X2



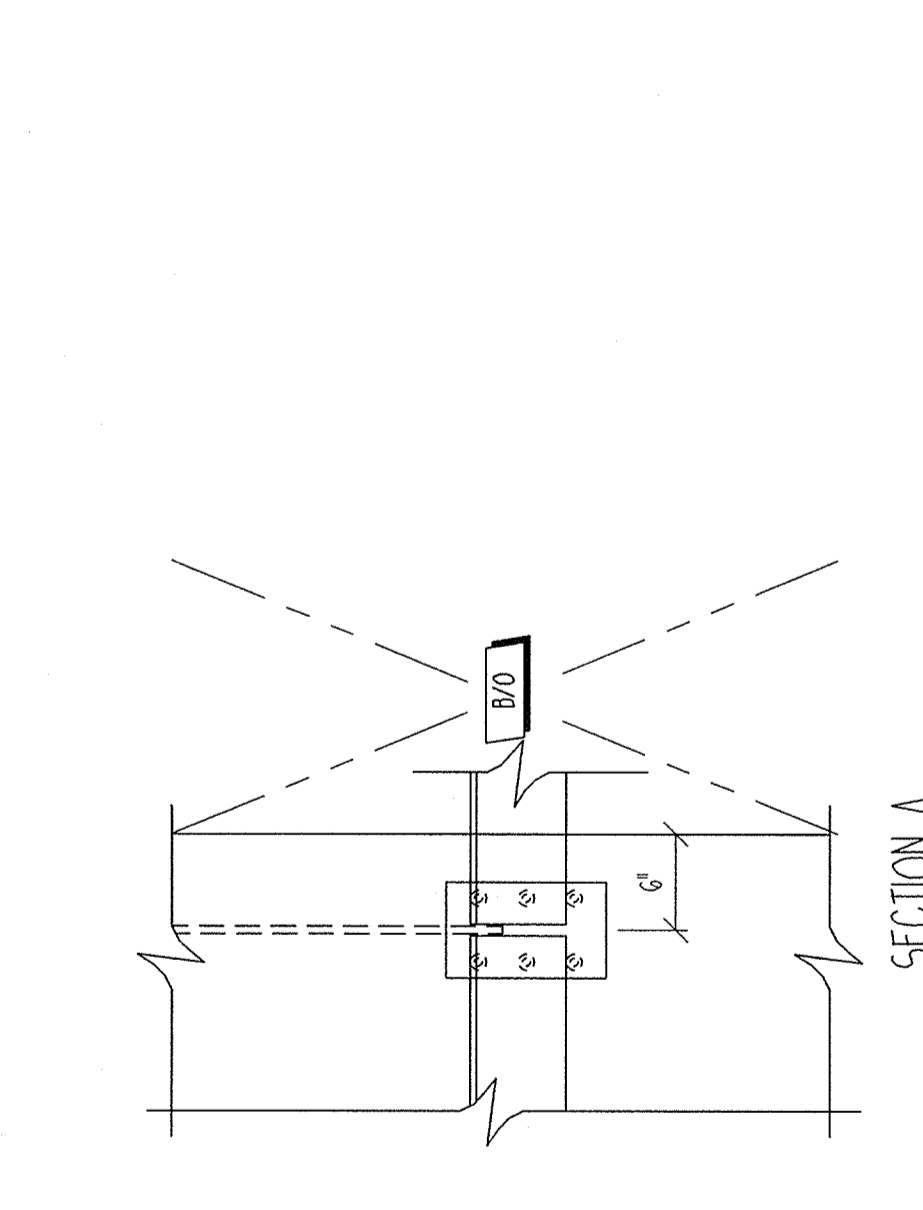
1
 10" WALL PANEL TO C.I.P. FOOTING CONNECTION
 PROVIDE CONNECTIONS PER PANEL AT 1/4 POINTS FROM EACH END MINIMUM
 SALMONS PC = X1



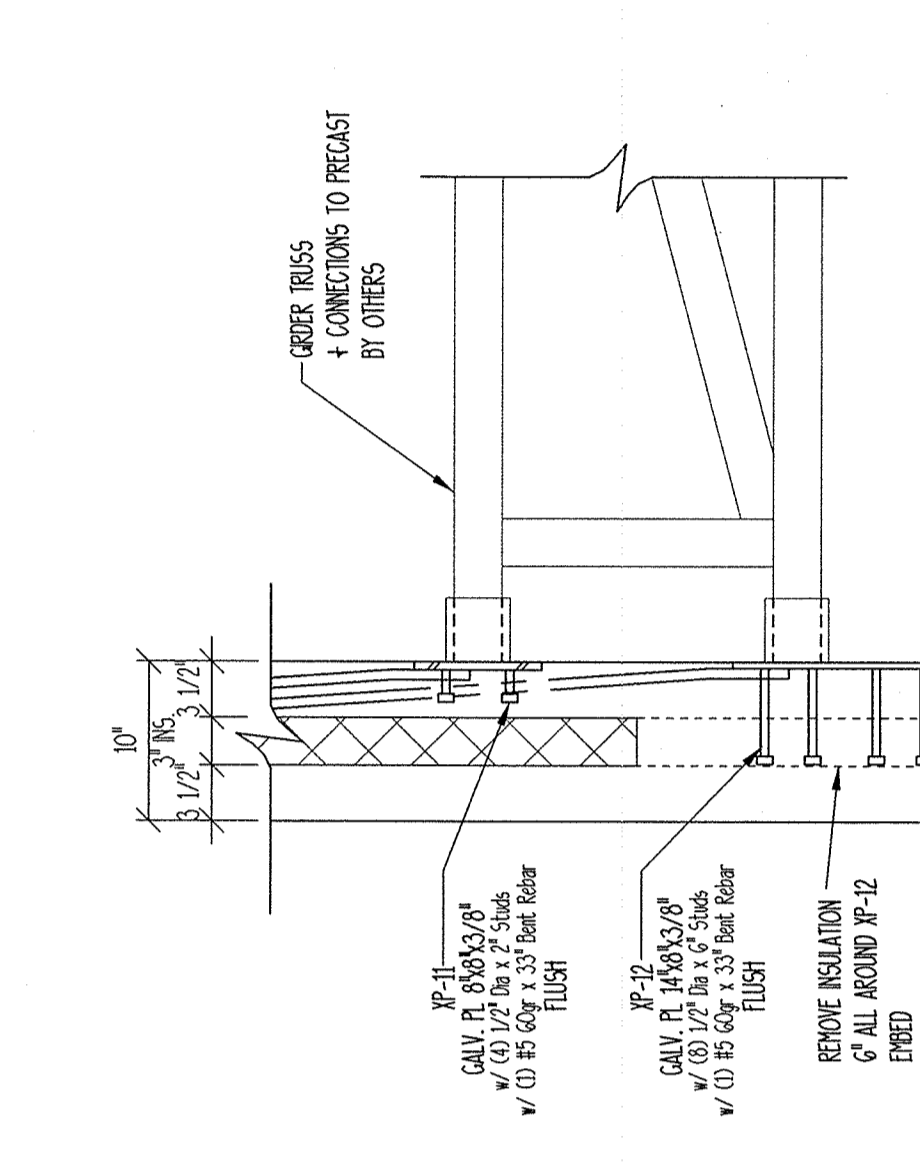
7
 10" WALL PANEL TO ROOF CONNECTION
 PROVIDE CONNECTION AT 30" O.C.
 SALMONS PC = X7



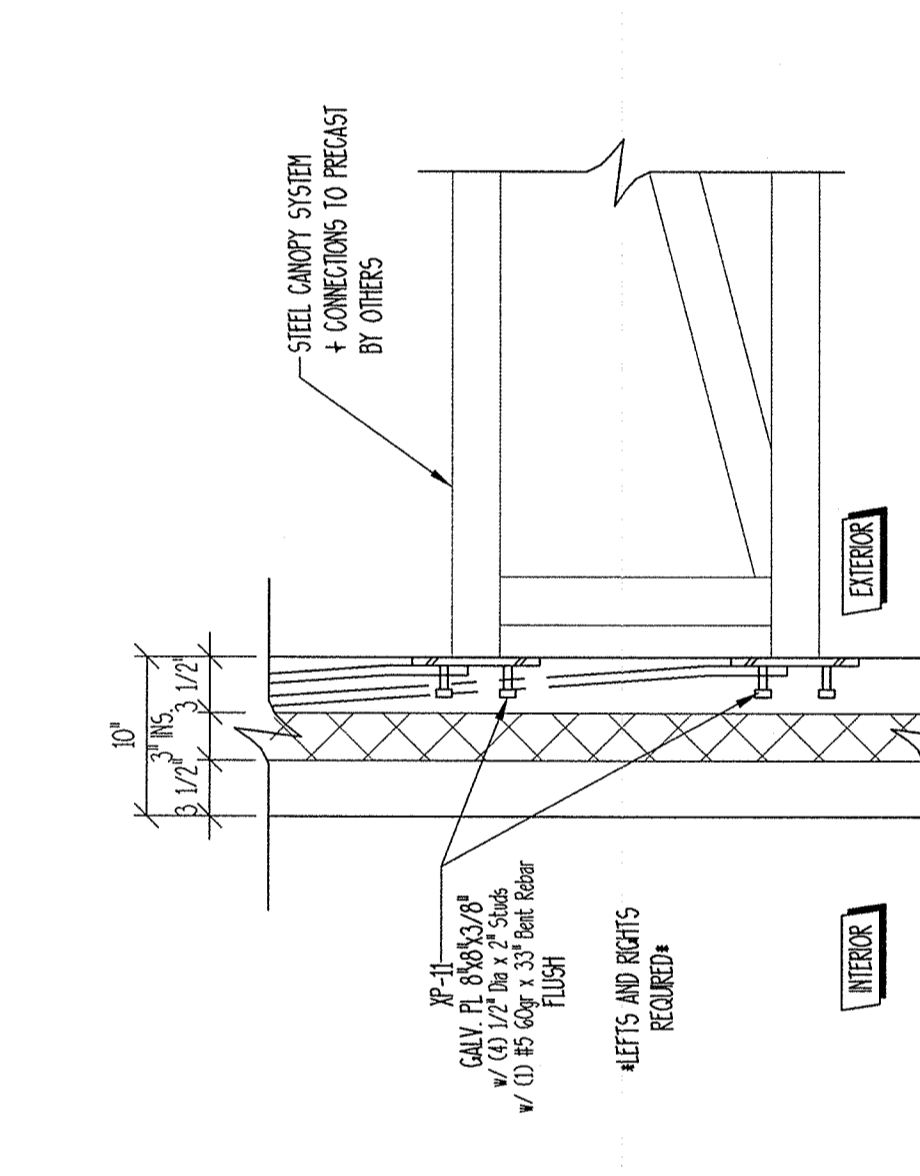
6
 10" WALL PANEL TO ROOF JOIST CONNECTION
 PROVIDE CONNECTION AT 30" O.C.
 SALMONS PC = X6



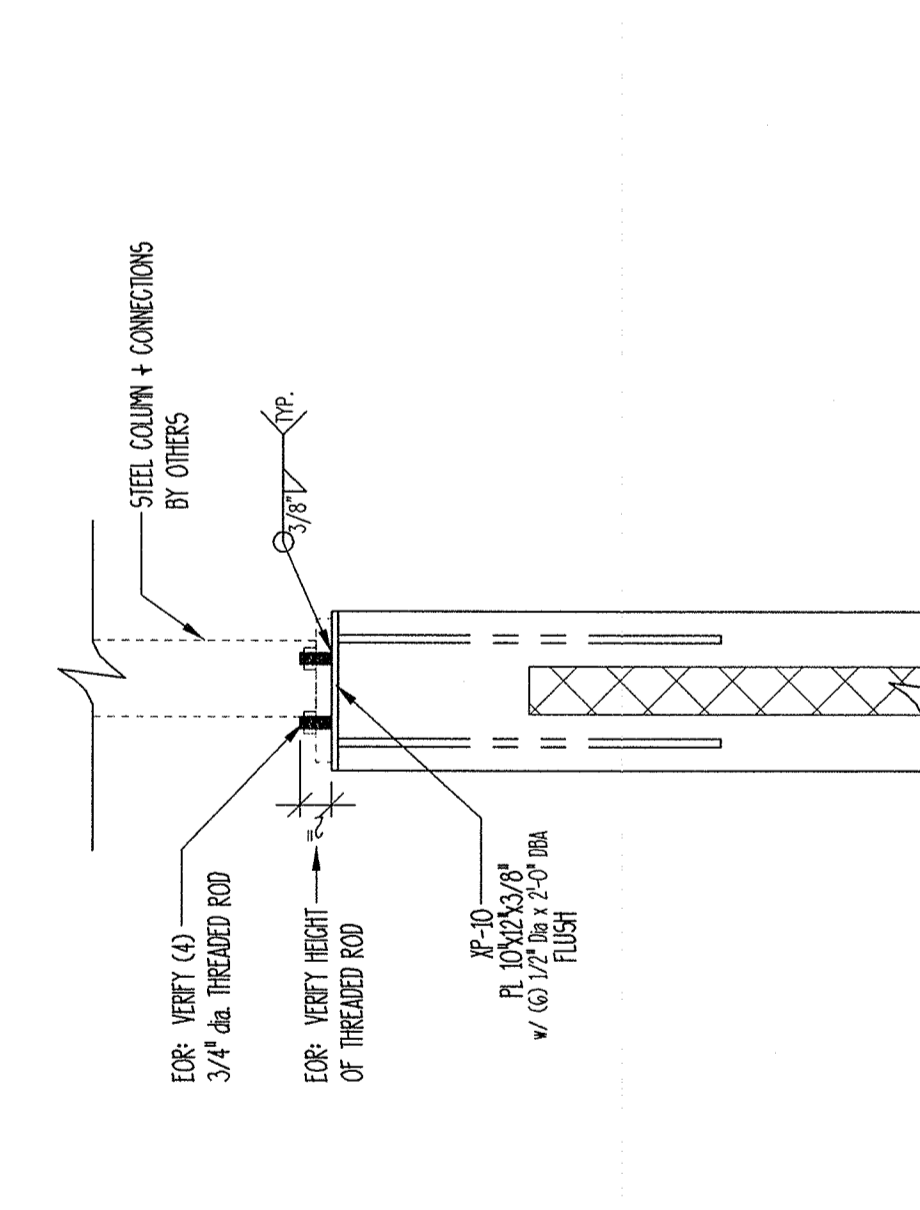
5
 10" WALL PANEL TO FLOOR TRUSS CONNECTION @ HEADER
 PROVIDE CONNECTION AT HEADERS
 SALMONS PC = X5



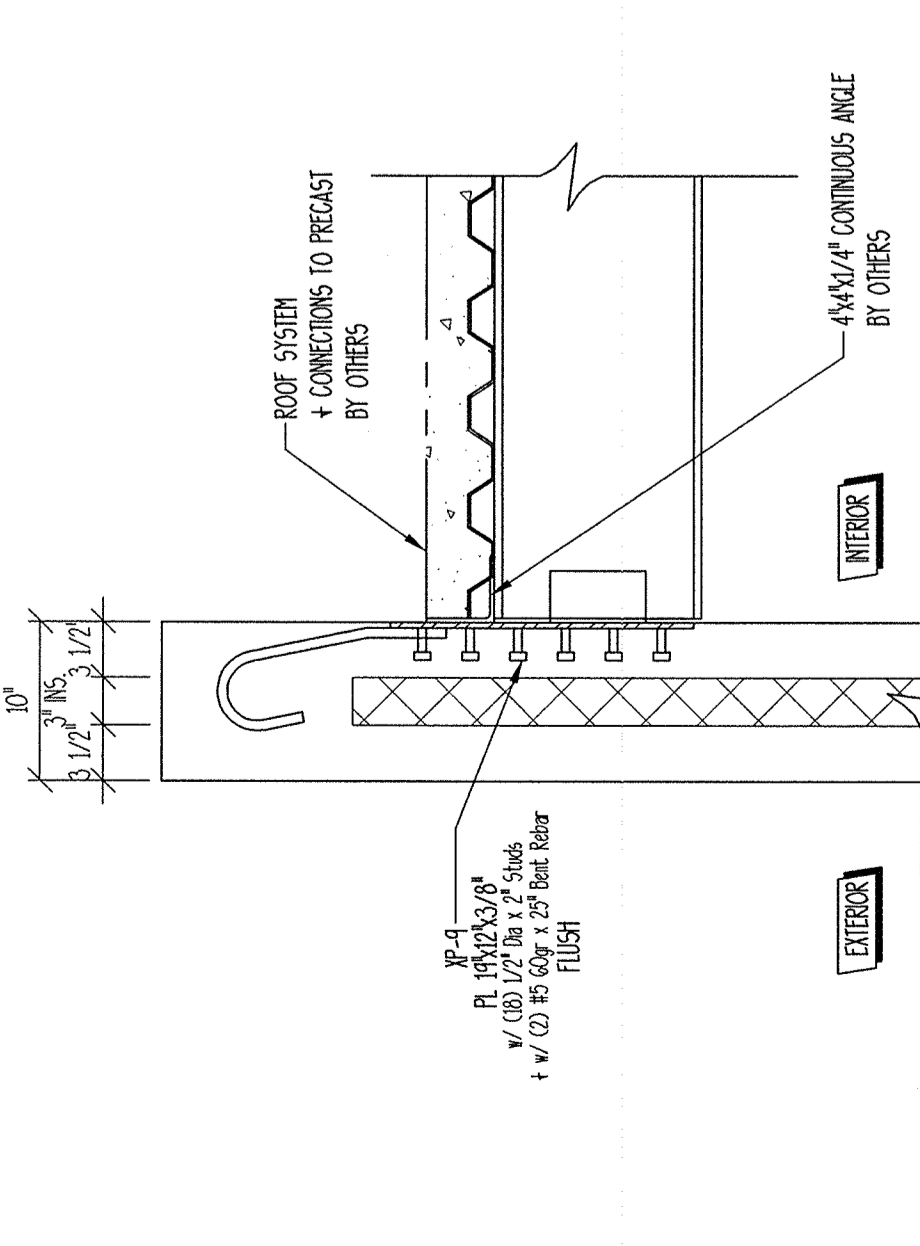
11
 10" WALL PANEL TO GIRDER TRUSS CONNECTION
 PROVIDE CONNECTION AT GIRDER TRUSS
 SALMONS PC = X11



10
 10" WALL PANEL TO STEEL CANOPY CONNECTION
 PROVIDE CONNECTION AT STEEL CANOPY
 SALMONS PC = X10



9
 10" WALL PANEL TO STEEL COLUMN CONNECTION
 PROVIDE CONNECTION AT ROOF BEAMS
 SALMONS PC = X9



8
 10" WALL PANEL TO ROOF BEAM CONNECTION
 PROVIDE CONNECTION AT ROOF BEAMS
 SALMONS PC = X8

APPROVAL MUST BE OBTAINED BEFORE CUTTING OR REMOVING OR MAKING ANY PRECAST/PRESTRESSED ELEMENTS ON THIS PROJECT BY PRESTRESSED CASTING COMPANY. THESE DRAWINGS ARE FOR THE MANUFACTURE AND ERECTION OF PRECAST CONCRETE PRODUCTS. SCALE: FOLLOW DIMENSIONS.

Salmons P.C.
 1121 SAN MATEO ABLONQUERUE, NM 87110
 (505) 282-1460 FAX (505) 282-1459
 www.salmonspc.com

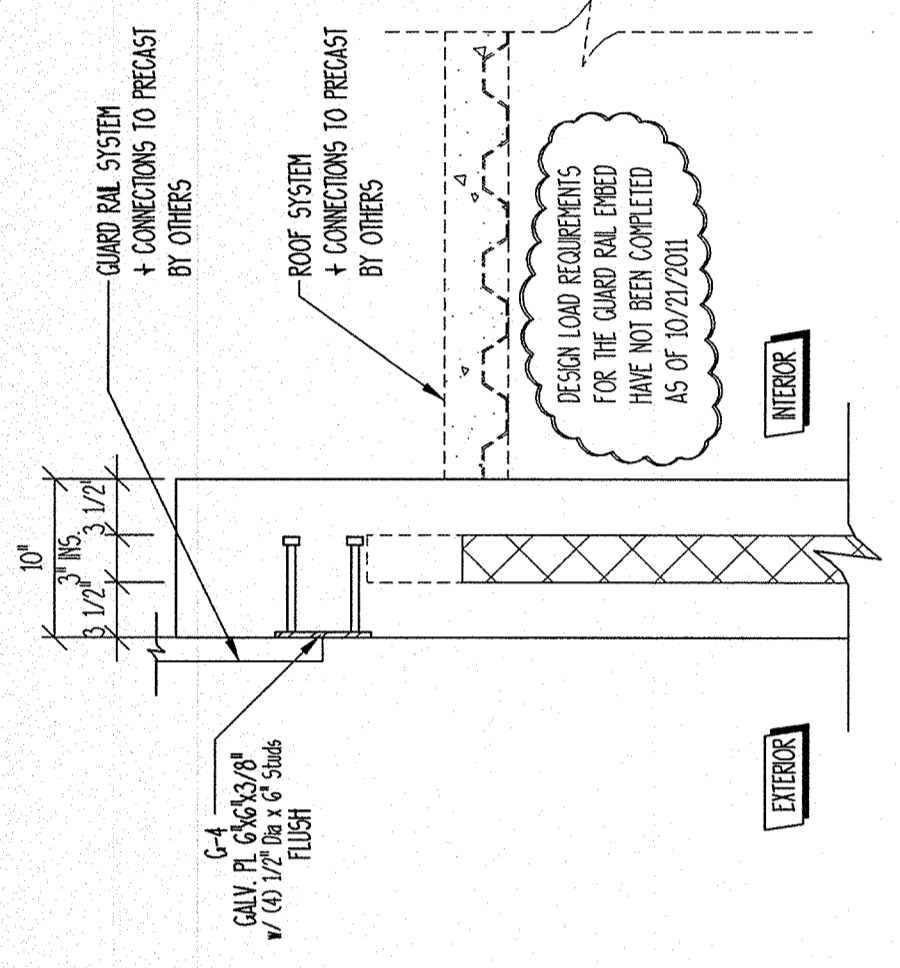
Prestressed Casting Co.
 1600 SOUTH SCENIC
 P.O. BOX 488 G.S. 85807
 SPRINGFIELD, MISSOURI
 (417) 869-7350 869-1263
 www.PrestressedCasting.com

WEST FARM ROAD 124
 BOIS D'ARC, MO
CHILES RESIDENCE

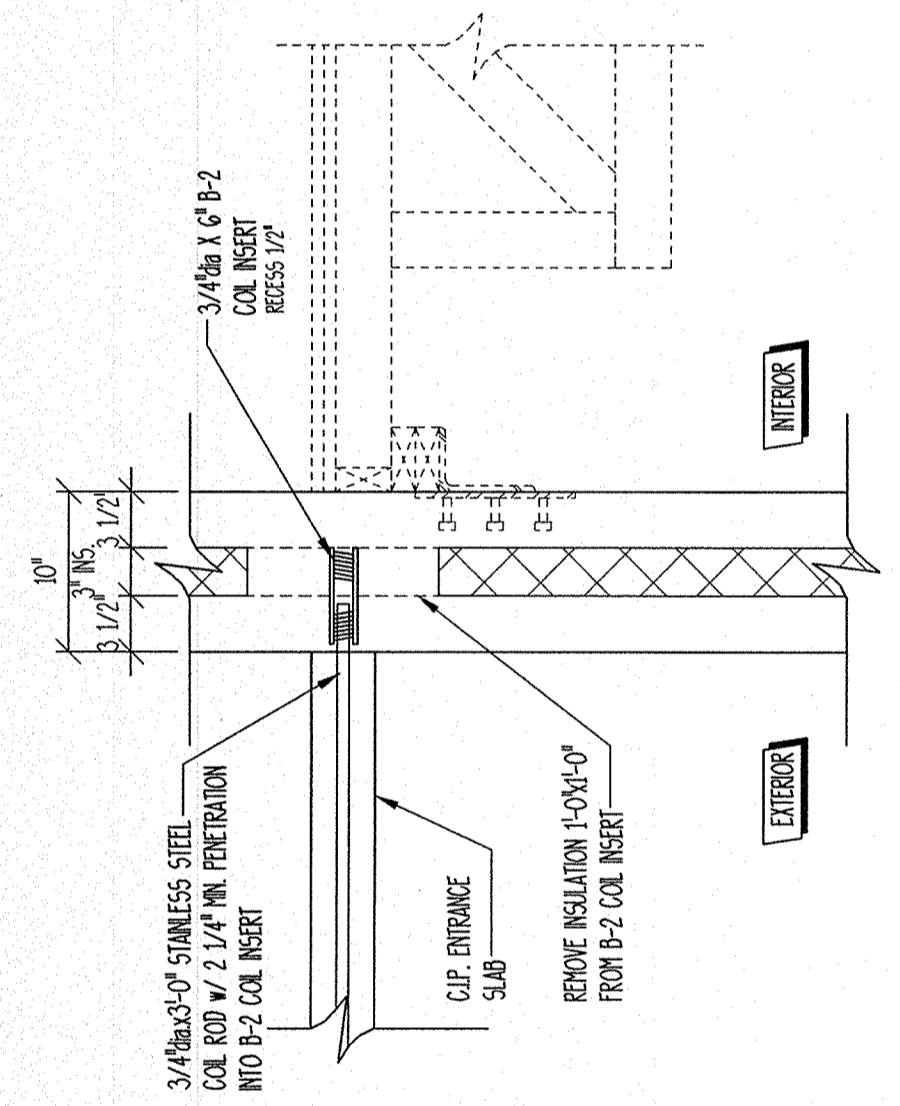
STATE OF MISSOURI
 JAMES P. ANDAZOLA
 ARCHITECT
 NUMBER E-200301854
 DATE 10/12/11

REVISIONS	DATE	DESCRIPTION	BY
1	10/20/11	ISSUED FOR PERMITS	WAW
2	10/20/11	ISSUED FOR PERMITS	WAW
3	10/20/11	ISSUED FOR PERMITS	WAW

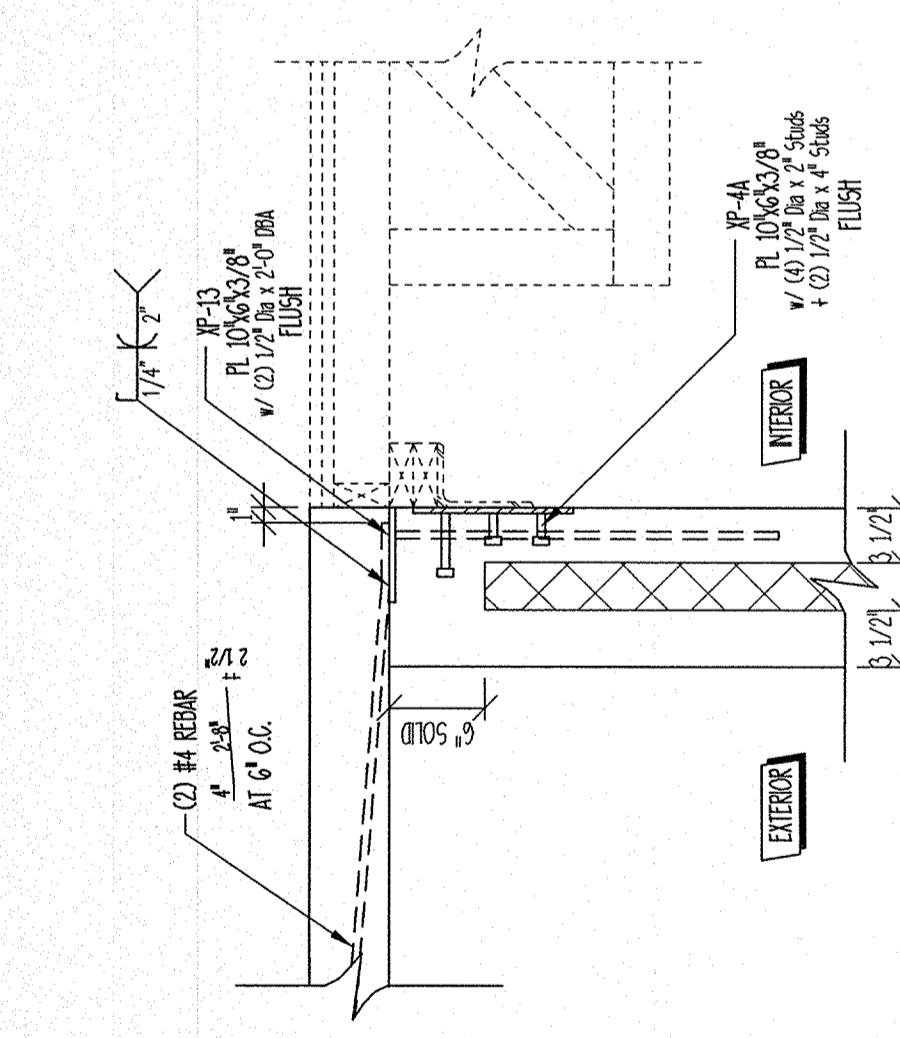
TITLE: CONNECTION DETAILS
 SCALE: NOT TO SCALE
 DRAWN BY: NRM
 CHECKED BY: LP
 DATE: 10-14-2011
 JOB NO.: 11.15
 DRAWING NUMBER: X-2



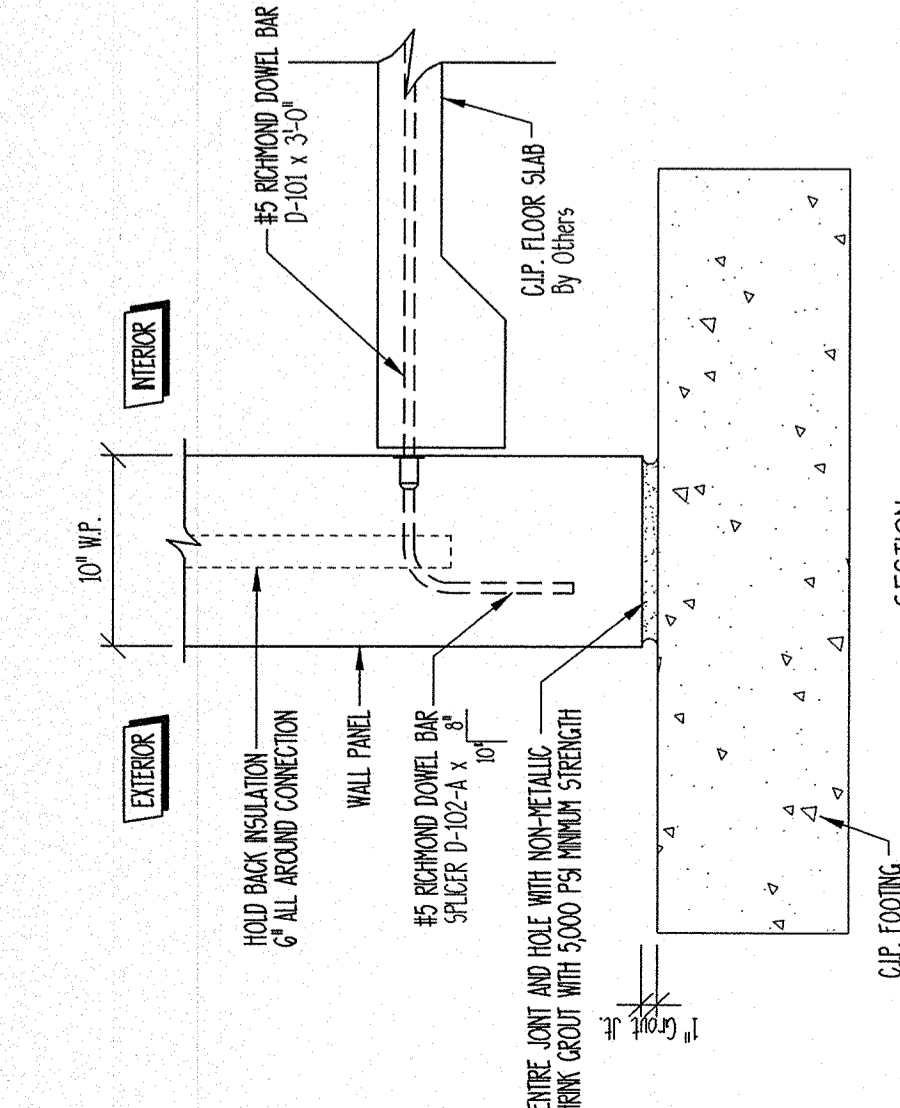
15
 X-2
GUARD RAIL TO 10" WALL PANEL CONNECTION
 PROVIDE CONNECTION AS SPECIFIED ON F-1 SHEET
 SALMONS PC = X15



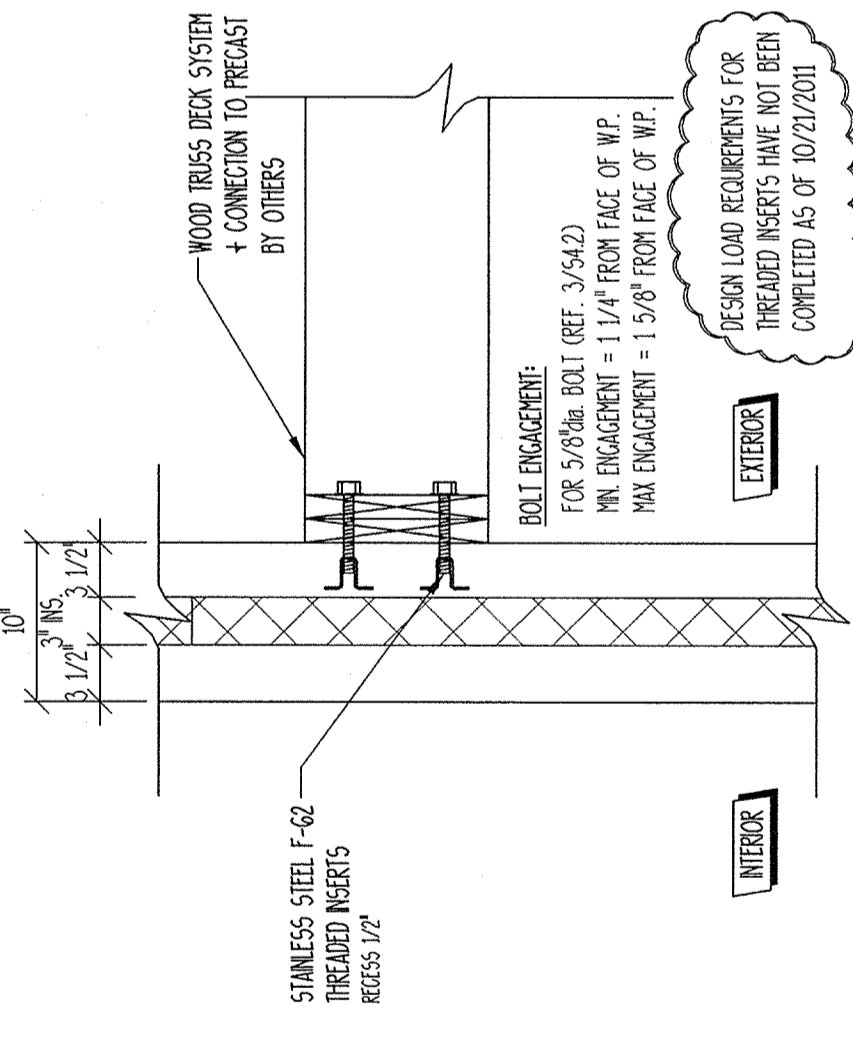
14
 X-2
10" WALL PANEL to C.I.P. ENTRANCE SLAB CONNECTION
 PROVIDE (4) CONNECTIONS PER PANEL
 SALMONS PC = X14



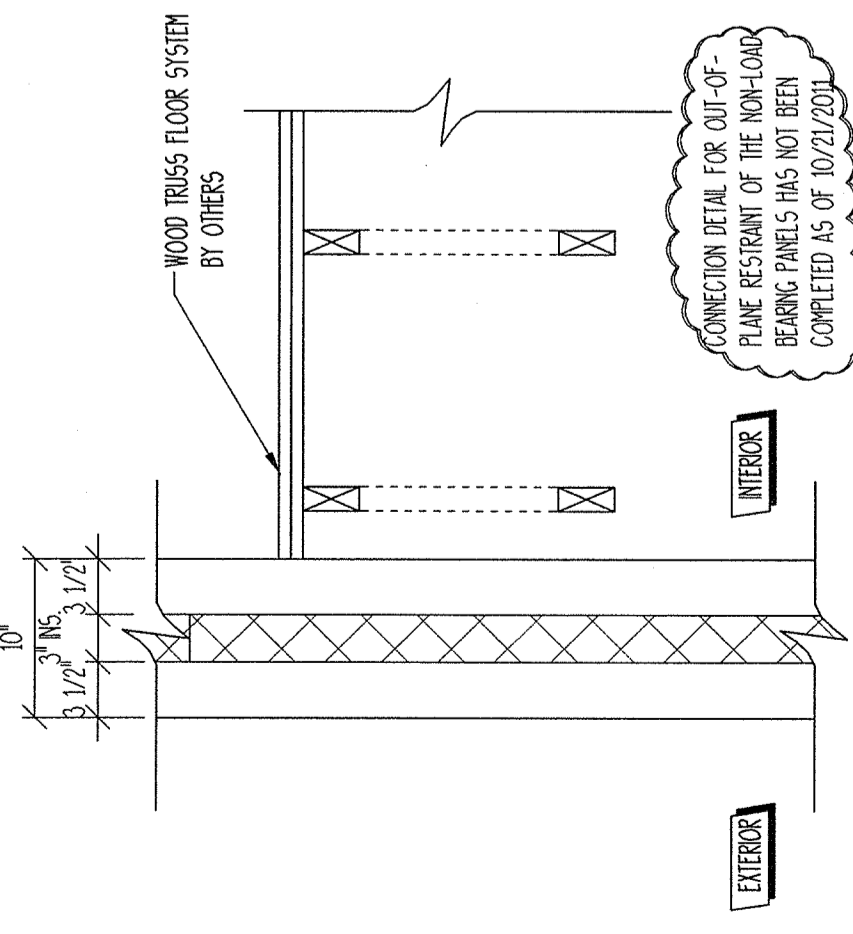
13
 X-2
10" WALL PANEL to C.I.P. ENTRANCE SLAB @ DOOR
 PROVIDE (3) CONNECTIONS • 2" O.C.
 SALMONS PC = X13



12
 X-2
10" WALL PANEL to C.I.P. SLAB CONNECTION
 PROVIDE (4) CONNECTIONS PER PANEL TYP.
 SALMONS PC = X12



17
 X-2
EXTERIOR DECK TO WALL PANEL CONNECTION
 PER DETAIL 3/42
 SALMONS PC = X17



16
 X-2
FLOOR TO N.I.B. PANEL CONNECTION
 SALMONS PC = X16